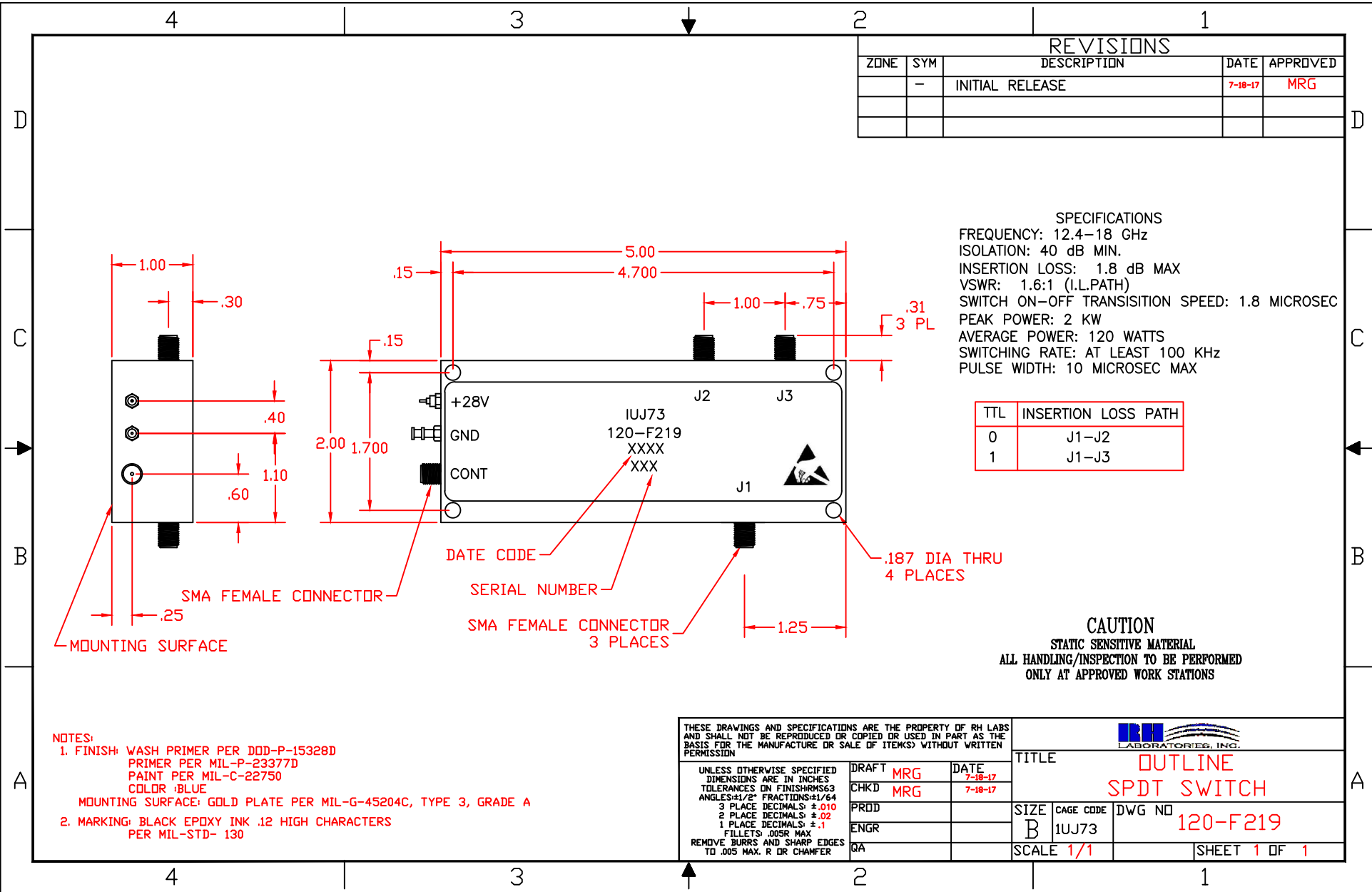


REVISIONS				
ZONE	SYM	DESCRIPTION	DATE	APPROVED
	-	INITIAL RELEASE	7-18-17	MRG

SPECIFICATIONS
 FREQUENCY: 12.4-18 GHz
 ISOLATION: 40 dB MIN.
 INSERTION LOSS: 1.8 dB MAX
 VSWR: 1.6:1 (I.L.PATH)
 SWITCH ON-OFF TRANSITION SPEED: 1.8 MICROSEC
 PEAK POWER: 2 KW
 AVERAGE POWER: 120 WATTS
 SWITCHING RATE: AT LEAST 100 KHZ
 PULSE WIDTH: 10 MICROSEC MAX

TTL	INSERTION LOSS PATH
0	J1-J2
1	J1-J3



CAUTION
 STATIC SENSITIVE MATERIAL
 ALL HANDLING/INSPECTION TO BE PERFORMED
 ONLY AT APPROVED WORK STATIONS

- NOTES:**
- FINISH: WASH PRIMER PER DOD-P-15328D
 PRIMER PER MIL-P-23377D
 PAINT PER MIL-C-22750
 COLOR: BLUE
 MOUNTING SURFACE: GOLD PLATE PER MIL-G-45204C, TYPE 3, GRADE A
 - MARKING: BLACK EPOXY INK .12 HIGH CHARACTERS
 PER MIL-STD-130

THESE DRAWINGS AND SPECIFICATIONS ARE THE PROPERTY OF RH LABS AND SHALL NOT BE REPRODUCED OR COPIED OR USED IN PART AS THE BASIS FOR THE MANUFACTURE OR SALE OF ITEMS WITHOUT WRITTEN PERMISSION

UNLESS OTHERWISE SPECIFIED
 DIMENSIONS ARE IN INCHES
 TOLERANCES ON FINISHES: .005
 ANGLES: 1/2° FRACTIONS: 1/64
 3 PLACE DECIMALS: ±.010
 2 PLACE DECIMALS: ±.02
 1 PLACE DECIMALS: ±.1
 FILLETS: .005R MAX
 REMOVE BURRS AND SHARP EDGES
 TO .005 MAX. R OR CHAMFER

DRAFT MRG		DATE 7-18-17		TITLE	
CHKD MRG		7-18-17		OUTLINE	
PRDD				SPDT SWITCH	
ENGR				SIZE	CAGE CODE
QA				B	IUJ73
				DWG NO	120-F219
				SCALE	1/1
				SHEET 1 OF 1	