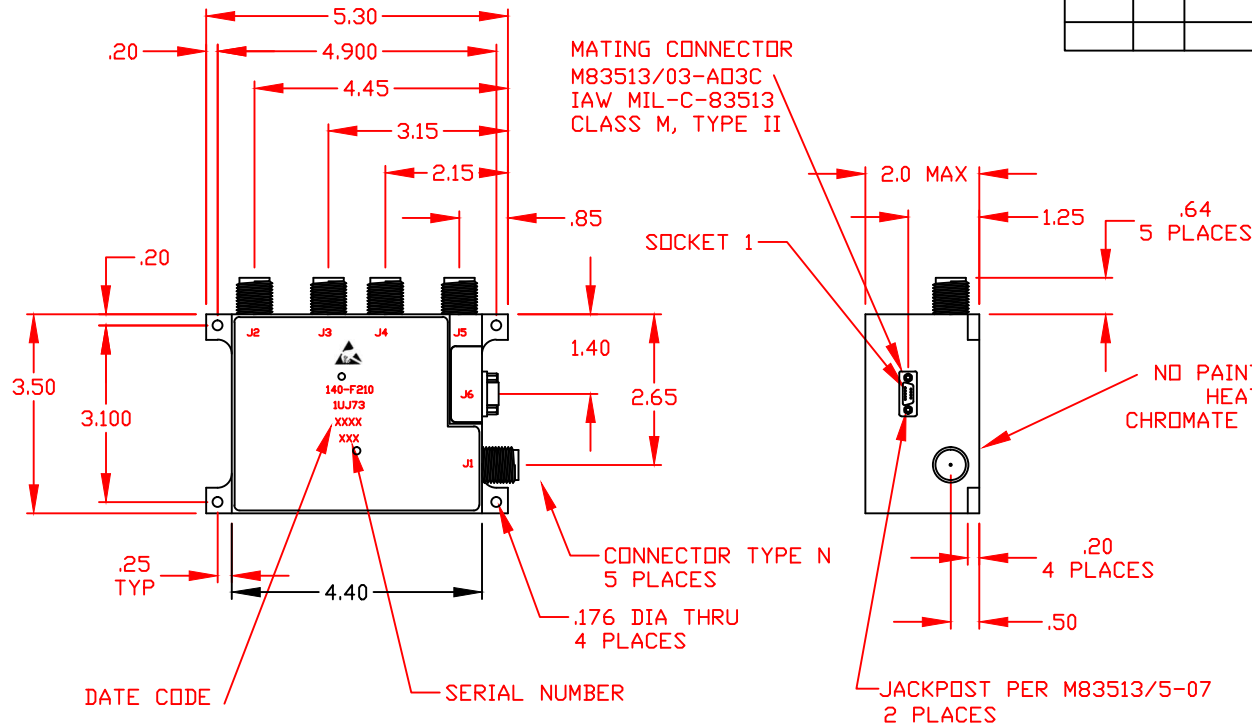


| REVISIONS | | | | |
|-----------|-----|-----------------|---------|----------|
| ZONE | SYM | DESCRIPTION | DATE | APPROVED |
| | - | INITIAL RELEASE | 7-18-17 | MRG |
| | | | | |
| | | | | |

TRUTH TABLE

| A1 | A0 | J2 | J3 | J4 | J5 |
|----|----|-----|-----|-----|-----|
| 0 | 0 | I.L | ISO | ISO | ISO |
| 0 | 1 | ISO | I.L | ISO | ISO |
| 1 | 0 | ISO | ISO | I.L | ISO |
| 1 | 1 | ISO | ISO | ISO | I.L |



| SOCKET NUMBER | FUNCTION |
|---------------|---------------|
| 1 | CONTROL A0 |
| 2 | CONTROL A1 |
| 3 | +5V |
| 4 | NO CONNECTION |
| 5 | +28V |
| 6 | GND |
| 7 | +28V |
| 8 | GND |
| 9 | NO CONNECTION |

CAUTION
 STATIC SENSITIVE MATERIAL
 ALL HANDLING/INSPECTION TO BE PERFORMED
 ONLY AT APPROVED WORK STATIONS

- NOTES:
- FINISH: WASH PRIMER PER DDD-P-15328
 PRIMER PER MIL-P-23377
 PAINT PER MIL-C-22750
 COLOR: BLUE
 - MARKING: BLACK INK .12 HIGH CHARACTERS
 PER MIL-STD-130
 - WEIGHT: 800 GRAMS MAX

THESE DRAWINGS AND SPECIFICATIONS ARE THE PROPERTY OF RH LABS AND SHALL NOT BE REPRODUCED OR COPIED OR USED IN PART AS THE BASIS FOR THE MANUFACTURE OR SALE OF ITEMS WITHOUT WRITTEN PERMISSION



UNLESS OTHERWISE SPECIFIED
 DIMENSIONS ARE IN INCHES
 TOLERANCES ON FINISHES:
 ANGLES: 1/2° FRACTIONS: 1/64
 3 PLACE DECIMALS: ±.010
 2 PLACE DECIMALS: ±.02
 1 PLACE DECIMALS: ±.1
 FILETS: .005R MAX
 REMOVE BURRS AND SHARP EDGES
 TO .005 MAX. R OR CHAMFER

TITLE
HIGH POWER SWITCH

SIZE: B CAGE CODE: 1UJ73 DWG NO: 140-F210
 SCALE: 1/2=1 SHEET 1 OF 1