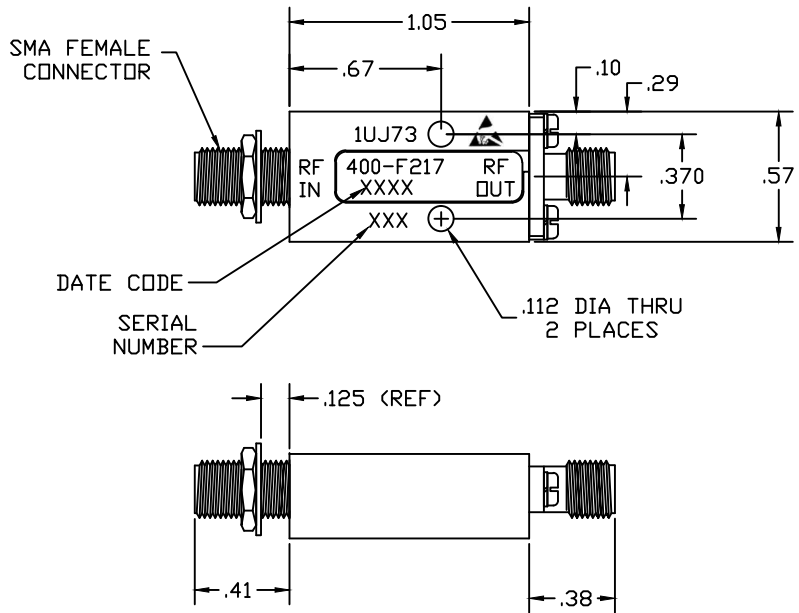


REVISIONS				
ZONE	SYM	DESCRIPTION	DATE	APPROVED
-		INITIAL RELEASE	7-18-17	MRG



SPECIFICATIONS

FREQUENCY RANGE:	1.215-1.4GHz
PEAK POWER:	10 WATTS MAX
PULSE WIDTH:	200 MICRSEC
DUTY CYCLE:	20%
AVERAGE POWER:	2 WATTS MAX
LEAKAGE:	+21 dBm MAX
INSERTION LOSS:	1.0 dB APPROX
RETURN LOSS:	14 dB MIN
RECOVERY TIME:	50 ns

CAUTION
 STATIC SENSITIVE MATERIAL
 ALL HANDLING/INSPECTION TO BE PERFORMED
 ONLY AT APPROVED WORK STATIONS

- NOTES:
- FINISH: WASH PRIMER PER DOD-P-15328D
 PRIMER PER MIL-P-23377D
 PAINT PER MIL-C-22750
 COLOR :BLUE
 - MARKING: BLACK INK .06 HIGH CHARACTERS
 PER MIL-STD-130.

THESE DRAWINGS AND SPECIFICATIONS ARE THE PROPERTY OF RH LABS AND SHALL NOT BE REPRODUCED OR COPIED OR USED IN PART AS THE BASIS FOR THE MANUFACTURE OR SALE OF ITEMS WITHOUT WRITTEN PERMISSION					
UNLESS OTHERWISE SPECIFIED DIMENSIONS ARE IN INCHES TOLERANCES ON FINISHES: 63 ANGLES: ±1/2° FRACTIONS: ±1/64 3 PLACE DECIMALS: ±.010 2 PLACE DECIMALS: ±.02 1 PLACE DECIMALS: ±.1 FILLETS: .005R MAX REMOVE BURRS AND SHARP EDGES TO .005 MAX. R OR CHAMFER					TITLE LIMITER OUTLINE
DRAFT	MRG	DATE	SIZE	CAGE CODE	DWG NO
CHKD	MRG	7-18-17	B	1UJ73	400-F217
PROD			SCALE		
ENGR			2/1		
QA					SHEET 1 OF 1