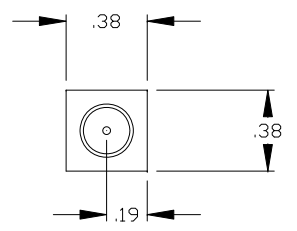
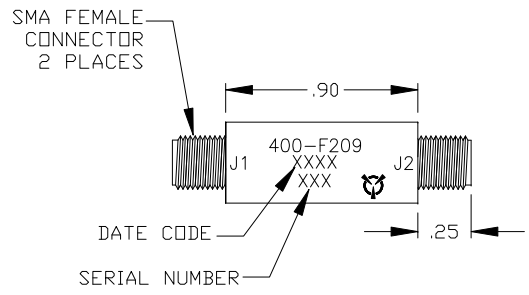


REVISIONS				
ZONE	SYM	DESCRIPTION	DATE	APPROVED



SPECIFICATIONS
 FREQUENCY RANGE: 2-8.0 GHz
 INSERTION LOSS: 1.6 dB MAX
 LEAKAGE POWER: 100 mWATTS
 PEAK POWER: 2000 WATTS
 AVG POWER: 20 WATTS
 RECOVERY TIME: 600 NANoseconds

- NOTES:**
- FINISH: WASH PRIMER PER DOD-P-15328D
 PRIMER PER MIL-P-23377D
 PAINT PER MIL-C-22750
 COLOR :BLUE
 - MARKING: BLACK EPOXY INK .06 HIGH PER MIL-STD- 130

THESE DRAWINGS AND SPECIFICATIONS ARE THE PROPERTY OF RH LABS AND SHALL NOT BE REPRODUCED OR COPIED OR USED IN PART AS THE BASIS FOR THE MANUFACTURE OR SALE OF ITEMS) WITHOUT WRITTEN PERMISSION

UNLESS OTHERWISE SPECIFIED
 DIMENSIONS ARE IN INCHES
 TOLERANCES ON FINISH: RMS63
 ANGLES: 1/2" FRACTIONS: 1/64
 3 PLACE DECIMALS: ± .010
 2 PLACE DECIMALS: ± .02
 1 PLACE DECIMALS: ± .1
 FILLETS: .005R MAX
 REMOVE BURRS AND SHARP EDGES TO .005 MAX. R OR CHAMFER

DRAFT	DEC	DATE	12-17-02
CHKD			
PRD			
ENGR			
QA			



TITLE			LIMITER OUTLINE	
SIZE	CAGE CODE	DWG NO	400-F209	
B	1UJ73			
SCALE	2/1		SHEET 1 OF 1	



One Tanguay Avenue
 Nashua, New Hampshire 03063-1711
 Phone: 603-459-5900 • Fax: 603-459-5901
 Email: Sales@RH-Labs.com