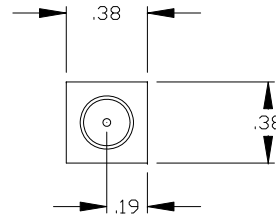
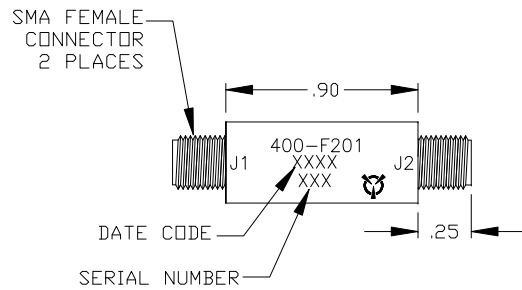


REVISIONS				
ZONE	SYM	DESCRIPTION	DATE	APPROVED



SPECIFICATIONS

FREQUENCY RANGE: 2-18.0 GHz  
 INSERTION LOSS: 2.2 dB MAX  
 LEAKAGE POWER: 50 mWATTS  
 PEAK POWER: 200 WATTS  
 AVG POWER: 1 WATT  
 RECOVERY TIME: 50 NANoseconds

NOTES:

- FINISH: WASH PRIMER PER DOD-P-15328D  
 PRIMER PER MIL-P-23377D  
 PAINT PER MIL-C-22750  
 COLOR :BLUE
- MARKING: BLACK EPOXY INK .06 HIGH PER MIL-STD- 130

THESE DRAWINGS AND SPECIFICATIONS ARE THE PROPERTY OF RH LABS AND SHALL NOT BE REPRODUCED OR COPIED OR USED IN PART AS THE BASIS FOR THE MANUFACTURE OR SALE OF ITEMS) WITHOUT WRITTEN PERMISSION

UNLESS OTHERWISE SPECIFIED  
 DIMENSIONS ARE IN INCHES  
 TOLERANCES ON FINISH: RMS63  
 ANGLES: 1/2° FRACTIONS: ±1/64  
 3 PLACE DECIMALS: ± .010  
 2 PLACE DECIMALS: ± .02  
 1 PLACE DECIMALS: ± .1  
 FILLETS: .005R MAX  
 REMOVE BURRS AND SHARP EDGES  
 TO .005 MAX. R OR CHAMFER

DRAFT	DEC	DATE
CHKD		12-17-02
PRD		
ENGR		
QA		

		TITLE	
		LIMITER OUTLINE	
SIZE	CAGE CODE	DWG NO	
B	1UJ73	400-F201	
SCALE	2/1	SHEET	1 OF 1



One Tanguay Avenue  
 Nashua, New Hampshire 03063-1711  
 Phone: 603-459-5900 • Fax: 603-459-5901  
 Email: Sales@RH-Labs.com