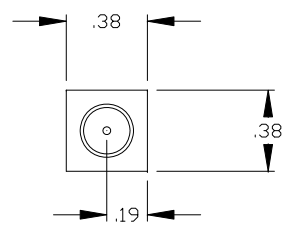
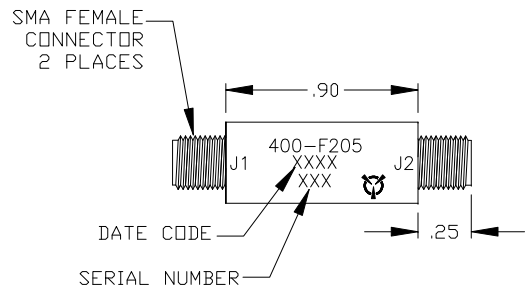


REVISIONS				
ZONE	SYM	DESCRIPTION	DATE	APPROVED



SPECIFICATIONS

FREQUENCY RANGE: 2-18.0 GHz

INSERTION LOSS: 2.5 dB MAX

LEAKAGE POWER: 50 mWATTS

PEAK POWER 1000 WATTS

AVG POWER 10 WATTS

RECOVERY TIME 400 NANoseconds

- NOTES:
- FINISH: WASH PRIMER PER DOD-P-15328D  
PRIMER PER MIL-P-23377D  
PAINT PER MIL-C-22750  
COLOR :BLUE
  - MARKING: BLACK EPOXY INK .06 HIGH PER MIL-STD- 130

THESE DRAWINGS AND SPECIFICATIONS ARE THE PROPERTY OF RH LABS AND SHALL NOT BE REPRODUCED OR COPIED OR USED IN PART AS THE BASIS FOR THE MANUFACTURE OR SALE OF ITEMS) WITHOUT WRITTEN PERMISSION

UNLESS OTHERWISE SPECIFIED  
DIMENSIONS ARE IN INCHES  
TOLERANCES ON FINISH: RMS63  
ANGLES: 1/2" FRACTIONS: 1/64  
3 PLACE DECIMALS: ± .010  
2 PLACE DECIMALS: ± .02  
1 PLACE DECIMALS: ± .1  
FILLETS: .005R MAX  
REMOVE BURRS AND SHARP EDGES TO .005 MAX. R OR CHAMFER

DRAFT	DEC	DATE	12-17-02
CHKD			
PRD			
ENGR			
QA			



TITLE		LIMITER OUTLINE	
SIZE	CAGE CODE	DWG NO	400-F205
B	1UJ73		
SCALE	2/1		SHEET 1 OF 1



One Tanguay Avenue  
Nashua, New Hampshire 03063-1711  
Phone: 603-459-5900 • Fax: 603-459-5901  
Email: Sales@RH-Labs.com