

4

3

2

1

REVISIONS

ZONE	SYM	DESCRIPTION	DATE	APPROVED

SPECIFICATIONS

LO & RF INPUT FREQUENCY: 2.0 TO 18.0 GHz
 IF OUTPUT FREQUENCY: DC TO 850 MHz
 LO DRIVE (900-M101): +7 dBm TO +10 dBm
 LO DRIVE (900-M102): +11 dBm TO +13 dBm
 LO DRIVE (900-M103): +14 dBm TO +17 dBm

SSB CONVERSION LOSS: 6.5 dB TYP.
 9.0 dB MAX.

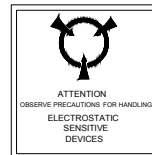
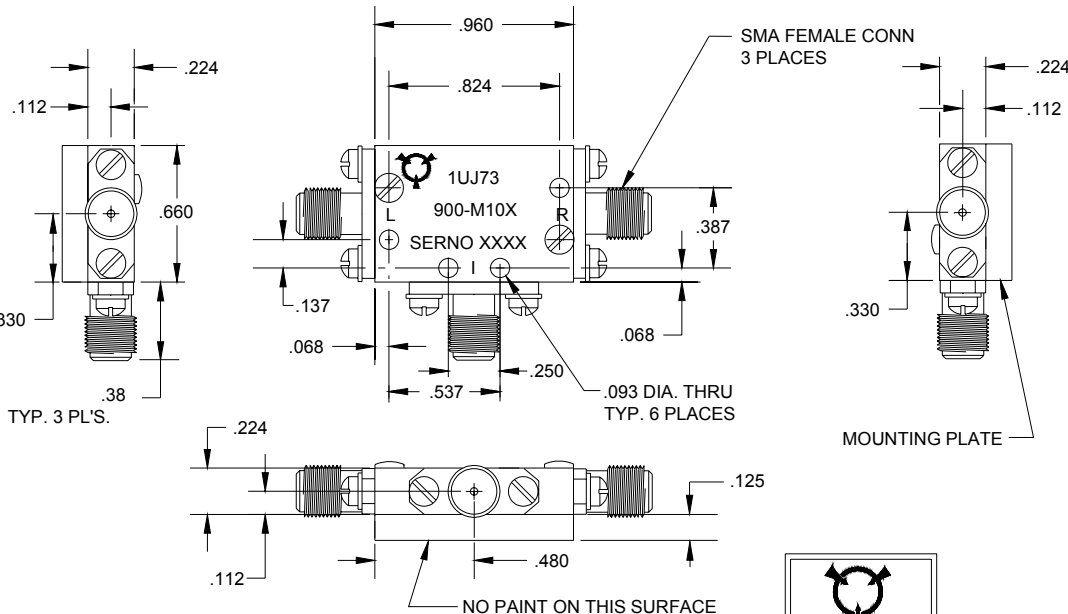
LO TO RF ISOLATION: 30 dB TYP.
 24 dB MIN.
 LO TO IF ISOLATION: 35 dB TYP.
 30 dB MIN.

VSWR:
 LO: 3.5:1 MAX.
 RF: 2.8:1 MAX.
 IF: 2.3:1 TYP.

INPUT 1dB
 COMPRESSION POINT:
 900-M101: +2 dBm TYP.
 900-M102: +6 dBm TYP.
 900-M103: +9 dBm TYP.

INPUT TWO-TONE THIRD
 ORDER INTERCEPT POINT:
 900-M101: +13 dBm TYP.
 900-M102: +16 dBm TYP.
 900-M103: +19 dBm TYP.

OPERATING TEMPERATURE: -55°C TO +100°C



NOTES:

- MATERIAL: HOUSING AND COVERS ALUMINUM ALLOY. CONNECTORS, CRES
- FINISH: (EXCEPT CONNECTORS) WASH PRIMER PER DOD-P-15328D, PRIMER PER MIL-P-23377D, PAINT PER MIL-C22750, COLOR BLUE.
- MOUNTING PLATE IS ANODIZED PER MIL-A-8625, TYPE I.
- MARKING: BLACK EPOXY INK AS FOLLOWS:
 "L", "R", "I", "1UJ73", "900-M10X", "SERNO XXX".
- DATE CODE ON SIDE OF HOUSING. (YYWW)

THESE DRAWINGS AND SPECIFICATIONS ARE THE PROPERTY OF RH LABS AND SHALL NOT BE REPRODUCED OR COPIED OR USED IN PART AS THE BASIS FOR THE MANUFACTURE OR SALE OF ITEM(S) WITHOUT WRITTEN PERMISSION

UNLESS OTHERWISE SPECIFIED
 DIMENSIONS ARE IN INCHES
 TOLERANCES ON FINISH RMS63
 ANGLES: ±1/2° FRACTIONS: ±1/64
 3 PLACE DECIMALS: ±.005
 2 PLACE DECIMALS: ±.01
 1 PLACE DECIMALS: ±.1
 FILLETS: .005R MAX
 REMOVE BURRS AND SHARP EDGES
 TO .005 MAX. R OR CHAMFER

DRAFT	R.A.J.	DATE	8/28/02
CHKD			
PROD			
ENGR	R.A.J.	DATE	8/28/02
QA			

TITLE	MIXER OUTLINE		
SIZE	CAGE CODE	DWG NO	
B	1UJ73	900-M101/102/103	
SCALE 2:1		SHEET 1 OF 1	

4

3

2

1