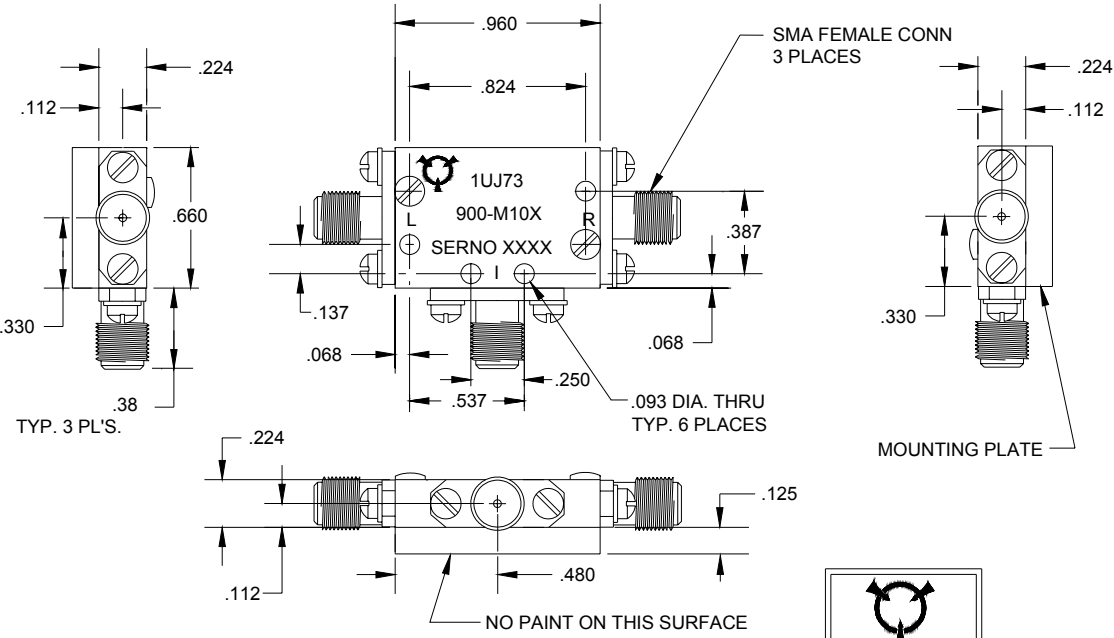


REVISIONS				
ZONE	SYM	DESCRIPTION	DATE	APPROVED

SPECIFICATIONS

LO & RF INPUT FREQUENCY:	2.0 TO 18.0 GHz
IF OUTPUT FREQUENCY:	0.7 TO 6.0 GHz
LO DRIVE (900-M104):	+7 dBM TO +10 dBM
LO DRIVE (900-M105):	+11 dBM TO +13 dBM
LO DRIVE (900-M106):	+14 dBM TO +17 dBM
SSB CONVERSION LOSS:	6.5 dB TYP. 9.5 dB MAX.
LO TO RF ISOLATION:	28 dB TYP. 23 dB MIN.
LO TO IF ISOLATION:	25 dB TYP. 20 dB MIN.
VSWR:	
LO:	3.5:1 MAX.
RF:	2.7:1 MAX.
IF:	2.2:1 TYP.
INPUT 1dB COMPRESSION POINT:	
900-M104:	+3 dBM TYP.
900-M105:	+7 dBM TYP.
900-M106:	+10 dBM TYP.
INPUT TWO-TONE THIRD ORDER INTERCEPT POINT:	
900-M104:	+15 dBM TYP.
900-M105:	+17 dBM TYP.
900-M106:	+20 dBM TYP.
OPERATING TEMPERATURE:	-55°C TO +100°C



NOTES:

- MATERIAL: HOUSING AND COVERS ALUMINUM ALLOY. CONNECTORS, CRES
- FINISH: (EXCEPT CONNECTORS) WASH PRIMER PER DOD-P-15328D, PRIMER PER MIL-P-23377D, PAINT PER MIL-C22750, COLOR BLUE.
- MOUNTING PLATE IS ANODIZED PER MIL-A-8625, TYPE I.
- MARKING: BLACK EPOXY INK AS FOLLOWS: "L", "R", "I", "1UJ73", "900-M10X", "SERNO XXX".
- DATE CODE ON SIDE OF HOUSING. (YYWW)



THESE DRAWINGS AND SPECIFICATIONS ARE THE PROPERTY OF RH LABS AND SHALL NOT BE REPRODUCED OR COPIED OR USED IN PART AS THE BASIS FOR THE MANUFACTURE OR SALE OF ITEM(S) WITHOUT WRITTEN PERMISSION



UNLESS OTHERWISE SPECIFIED DIMENSIONS ARE IN INCHES TOLERANCES ON FINISH: RMS63 ANGLES: ±1/2° FRACTIONS: ±1/64 3 PLACE DECIMALS: ± .005 2 PLACE DECIMALS: ± .01 1 PLACE DECIMALS: ± .1 FILLETS: .005R MAX REMOVE BURRS AND SHARP EDGES TO .005 MAX. R OR CHAMFER		DRAFT R.A.J. DATE 8/28/02	TITLE MIXER OUTLINE	
CHKD	PROD	ENGR R.A.J. DATE 8/28/02	SIZE B	CAGE CODE 1UJ73
QA			DWG NO 900-M104/105/106	
SCALE 2:1			SHEET 1 OF 1	