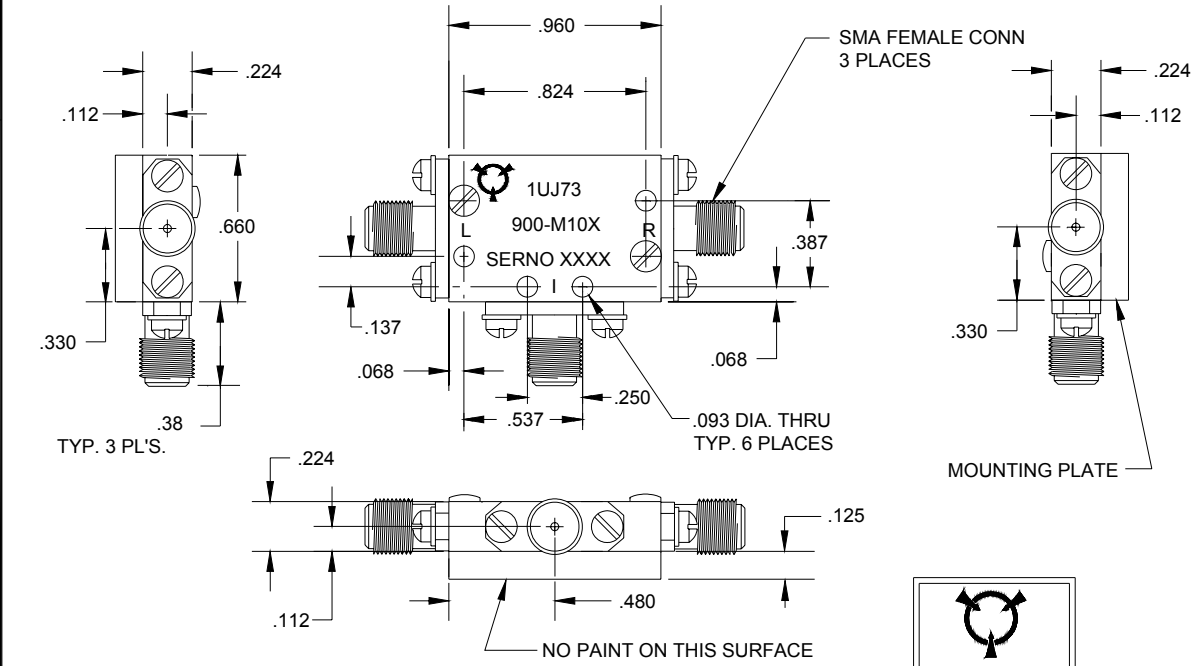


REVISIONS				
ZONE	SYM	DESCRIPTION	DATE	APPROVED

SPECIFICATIONS

LO & RF INPUT FREQUENCY: 2.0 TO 8.0 GHz
 IF OUTPUT FREQUENCY: DC TO 850 MHz
 LO DRIVE (900-M107): +7 dBm TO +10 dBm
 LO DRIVE (900-M108): +11 dBm TO +13 dBm
 LO DRIVE (900-M109): +14 dBm TO +17 dBm
 SSB CONVERSION LOSS: 6.5 dB TYP.
 8.5 dB MAX.
 LO TO RF ISOLATION: 30 dB TYP.
 24 dB MIN.
 LO TO IF ISOLATION: 35 dB TYP.
 30 dB MIN.
 VSWR:
 LO: 3.0:1 MAX.
 RF: 2.8:1 MAX.
 IF: 2.3:1 TYP.
 INPUT 1dB COMPRESSION POINT:
 900-M107: +2 dBm TYP.
 900-M108: +6 dBm TYP.
 900-M109: +9 dBm TYP.
 INPUT TWO-TONE THIRD ORDER INTERCEPT POINT:
 900-M107: +13 dBm TYP.
 900-M108: +16 dBm TYP.
 900-M109: +19 dBm TYP.
 OPERATING TEMPERATURE: -55°C TO +100°C



NOTES:

1. MATERIAL: HOUSING AND COVERS ALUMINUM ALLOY. CONNECTORS, CRES
2. FINISH: (EXCEPT CONNECTORS) WASH PRIMER PER DOD-P-15328D, PRIMER PER MIL-P-23377D, PAINT PER MIL-C22750, COLOR BLUE.
3. MOUNTING PLATE IS ANODIZED PER MIL-A-8625, TYPE I.
4. MARKING: BLACK EPOXY INK AS FOLLOWS: "L", "R", "I", "1UJ73", "900-M10X", "SERNO XXX".
5. DATE CODE ON SIDE OF HOUSING. (YYWW)



UNLESS OTHERWISE SPECIFIED DIMENSIONS ARE IN INCHES TOLERANCES ON FINISH-RMS03 ANGLES-1/2" FRACTIONS-±1/64 3 PLACE DECIMALS: ± .005 2 PLACE DECIMALS: ± .01 1 PLACE DECIMALS: ± .1 FILETS: .005R MAX REMOVE BURRS AND SHARP EDGES TO .005 MAX. R OR CHAMFER		DRAFT R.A.J.	DATE 8/28/02	TITLE MIXER OUTLINE	
CHKD	PROD	ENGR R.A.J.	8/28/02	SIZE B	CAGE CODE 1UJ73
QA	SCALE 2:1		DWG NO 900-M107/108/109		
				SHEET 1 OF 1	

D
C
B
A

D
C
B
A

4 3 2 1

4 3 2 1