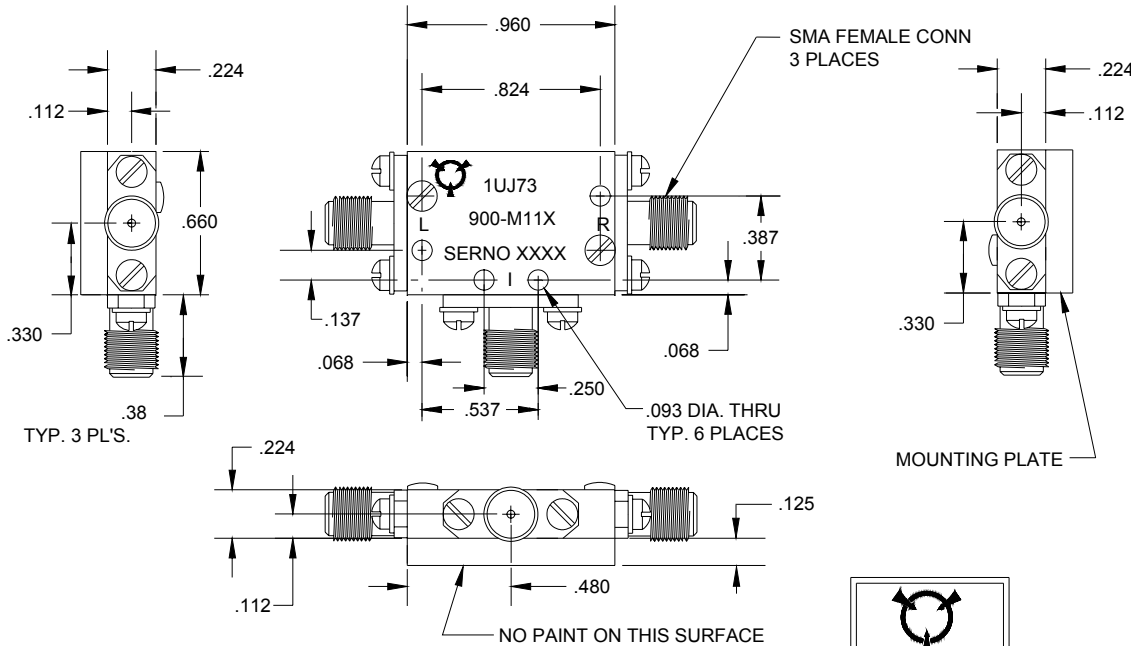


REVISIONS				
ZONE	SYM	DESCRIPTION	DATE	APPROVED



**SPECIFICATIONS**

LO & RF INPUT FREQUENCY: 8.0 TO 18.0 GHz  
 IF OUTPUT FREQUENCY: 0.7 TO 6.0 GHz  
 LO DRIVE (900-M116): +7 dBM TO +10 dBM  
 LO DRIVE (900-M117): +11 dBM TO +13 dBM  
 LO DRIVE (900-M118): +14 dBM TO +17 dBM

SSB CONVERSION LOSS: 6.5 dB TYP.  
 9.5 dB MAX.

LO TO RF ISOLATION: 28 dB TYP.  
 23 dB MIN.

LO TO IF ISOLATION: 25 dB TYP.  
 20 dB MIN.

VSWR:  
 LO: 3.5:1 MAX.  
 RF: 2.7:1 MAX.  
 IF: 2.2:1 TYP.

INPUT 1dB COMPRESSION POINT:  
 900-M116: +3 dBM TYP.  
 900-M117: +7 dBM TYP.  
 900-M118: +10 dBM TYP.

INPUT TWO-TONE THIRD ORDER INTERCEPT POINT:  
 900-M116: +15 dBM TYP.  
 900-M117: +17 dBM TYP.  
 900-M118: +20 dBM TYP.

OPERATING TEMPERATURE: -55°C TO +100°C

**NOTES:**

1. MATERIAL: HOUSING AND COVERS ALUMINUM ALLOY. CONNECTORS, CRES
2. FINISH: (EXCEPT CONNECTORS) WASH PRIMER PER DOD-P-15328D, PRIMER PER MIL-P-23377D, PAINT PER MIL-C22750, COLOR BLUE.
3. MOUNTING PLATE IS ANODIZED PER MIL-A-8625, TYPE I.
4. MARKING: BLACK EPOXY INK AS FOLLOWS:  
 "L", "R", "I", "1UJ73", "900-M11X", "SERNO XXX".
5. DATE CODE ON SIDE OF HOUSING. (YYWW)



UNLESS OTHERWISE SPECIFIED DIMENSIONS ARE IN INCHES TOLERANCES ON FINISH: RMS63 ANGLES: 1/2° FRACTIONS: ±1/64 3 PLACE DECIMALS: ± .005 2 PLACE DECIMALS: ± .01 1 PLACE DECIMALS: ± .1 FILLETS: .005R MAX REMOVE BURRS AND SHARP EDGES TO .005 MAX. R OR CHAMFER		DRAFT R.A.J.	DATE 8/28/02	TITLE MIXER OUTLINE		
CHKD	PROD	ENGR R.A.J.	8/28/02	SIZE B	CAGE CODE 1UJ73	DWG NO 900-M116/117/118
QA	SCALE 2:1			SHEET 1 OF 1		

