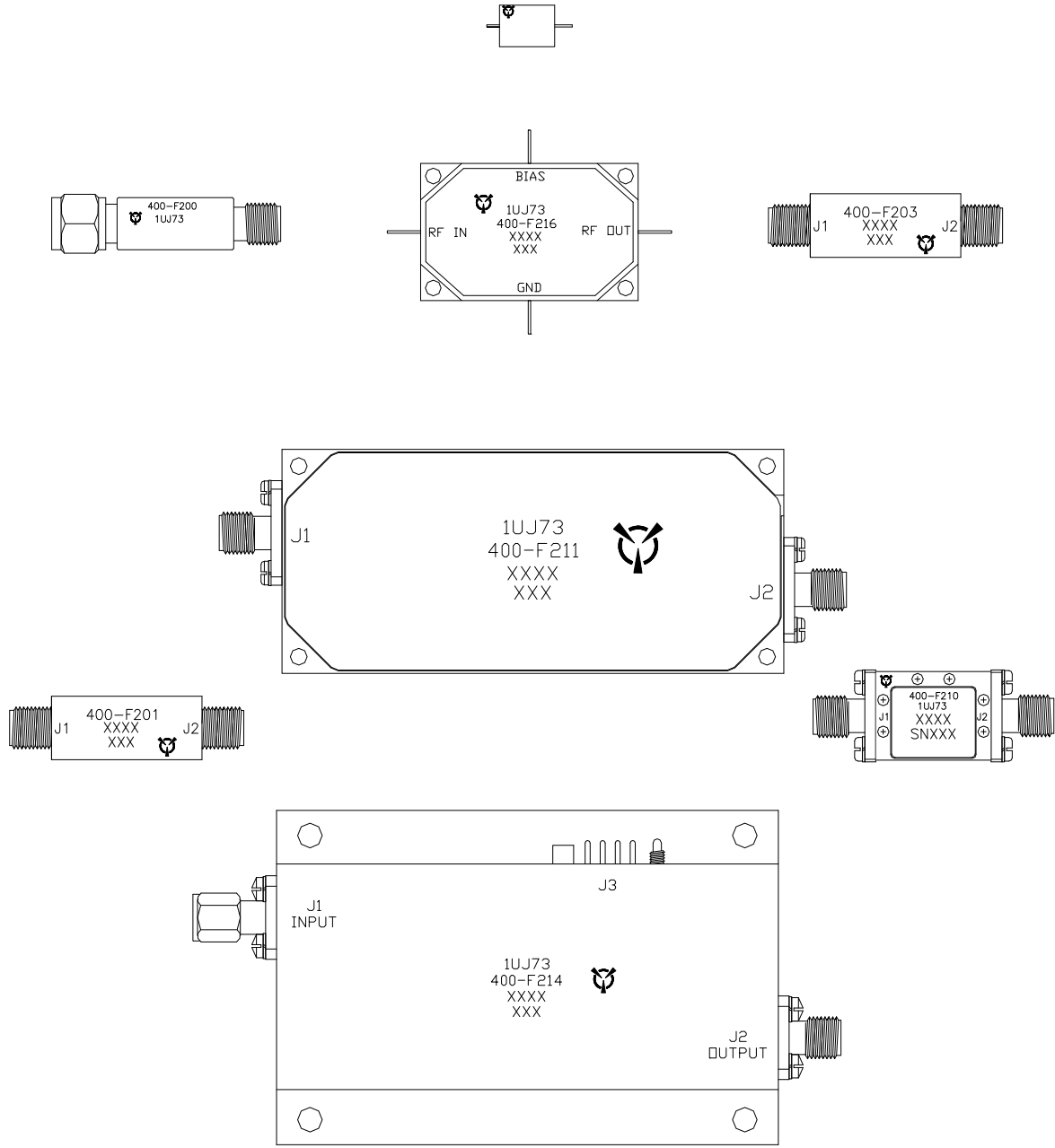
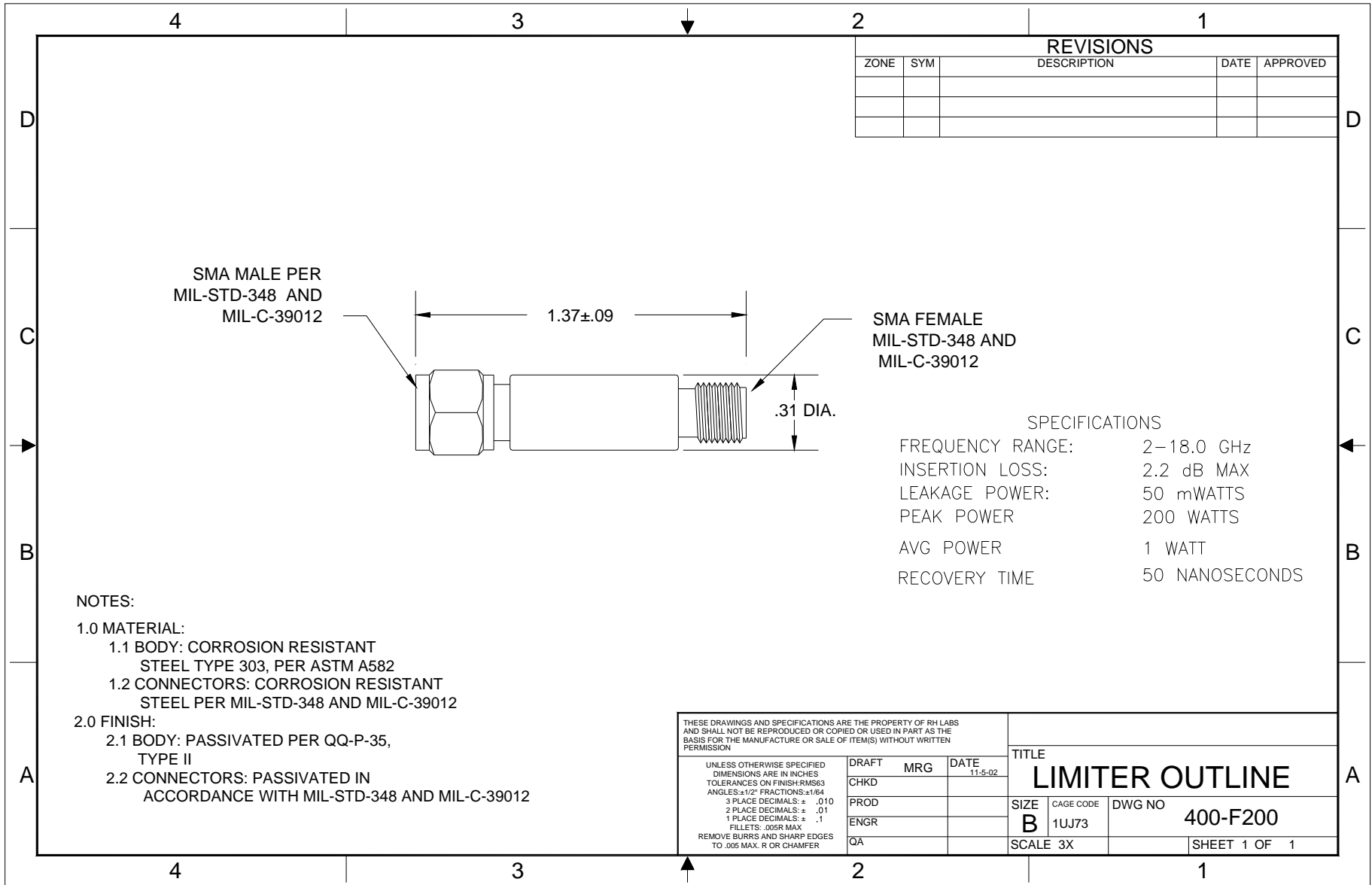


# STANDARD LIMITER CATALOG



## TABLE OF CONTENT

Page Number	Model Number	Package	Frequency Range	Insertion Loss (dB)	Leakage Power (mw)
3	400-F200	Coaxial	2-18 GHz	2.2	50
4	400-F201	Module	2-18 GHz	2.2	50
5	400-F202	Coaxial	2-18 GHz	2.0	80
6	400-F203	Module	2-18 GHz	2.0	80
7	400-F204	Coaxial	2-18 GHz	2.5	50
8	400-F205	Module	2-18 GHz	2.5	50
9	400-F206	Coaxial	2-18 GHz	2.8	20
10	400-F207	Module	2-18 GHz	2.8	20
11	400-F208	Coaxial	2-8 GHz	1.6	100
12	400-F209	Module	2-8 GHz	1.6	100



REVISIONS				
ZONE	SYM	DESCRIPTION	DATE	APPROVED

SMA MALE PER  
MIL-STD-348 AND  
MIL-C-39012

SMA FEMALE  
MIL-STD-348 AND  
MIL-C-39012

**SPECIFICATIONS**

FREQUENCY RANGE:	2-18.0 GHz
INSERTION LOSS:	2.2 dB MAX
LEAKAGE POWER:	50 mWATTS
PEAK POWER	200 WATTS
AVG POWER	1 WATT
RECOVERY TIME	50 NANOSECONDS

**NOTES:**

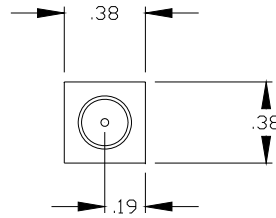
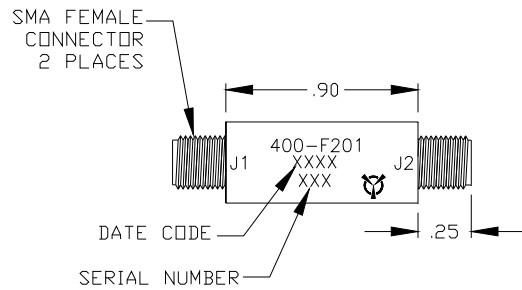
- 1.0 MATERIAL:
  - 1.1 BODY: CORROSION RESISTANT  
STEEL TYPE 303, PER ASTM A582
  - 1.2 CONNECTORS: CORROSION RESISTANT  
STEEL PER MIL-STD-348 AND MIL-C-39012
- 2.0 FINISH:
  - 2.1 BODY: PASSIVATED PER QQ-P-35,  
TYPE II
  - 2.2 CONNECTORS: PASSIVATED IN  
ACCORDANCE WITH MIL-STD-348 AND MIL-C-39012

<small>THESE DRAWINGS AND SPECIFICATIONS ARE THE PROPERTY OF RH LABS AND SHALL NOT BE REPRODUCED OR COPIED OR USED IN PART AS THE BASIS FOR THE MANUFACTURE OR SALE OF ITEM(S) WITHOUT WRITTEN PERMISSION</small>			<b>TITLE</b> <b>LIMITER OUTLINE</b>		
<small>UNLESS OTHERWISE SPECIFIED DIMENSIONS ARE IN INCHES TOLERANCES ON FINISH: RMS63 ANGLES: ±1/2° FRACTIONS: ±1/64 3 PLACE DECIMALS: ± .010 2 PLACE DECIMALS: ± .01 1 PLACE DECIMALS: ± .1 FILLETS: .005R MAX REMOVE BURRS AND SHARP EDGES TO .005 MAX. R OR CHAMFER</small>	<small>DRAFT</small> <small>MRG</small> <small>DATE</small> <small>11-5-02</small>	<small>CHKD</small> <small>PROD</small> <small>ENGR</small> <small>QA</small>	<small>SIZE</small> <b>B</b>	<small>CAGE CODE</small> 1UJ73	<small>DWG NO</small> <b>400-F200</b>
<small>SCALE 3X</small>			<small>SHEET 1 OF 1</small>		



One Tanguay Avenue  
 Nashua, New Hampshire 03063-1711  
 Phone: 603-459-5900 • Fax: 603-459-5901

REVISIONS				
ZONE	SYM	DESCRIPTION	DATE	APPROVED



SPECIFICATIONS

FREQUENCY RANGE: 2-18.0 GHz  
 INSERTION LOSS: 2.2 dB MAX  
 LEAKAGE POWER: 50 mWATTS  
 PEAK POWER: 200 WATTS  
 AVG POWER: 1 WATT  
 RECOVERY TIME: 50 NANoseconds

NOTES:

- FINISH: WASH PRIMER PER DOD-P-15328D  
 PRIMER PER MIL-P-23377D  
 PAINT PER MIL-C-22750  
 COLOR :BLUE
- MARKING: BLACK EPOXY INK .06 HIGH PER MIL-STD- 130

THESE DRAWINGS AND SPECIFICATIONS ARE THE PROPERTY OF RH LABS AND SHALL NOT BE REPRODUCED OR COPIED OR USED IN PART AS THE BASIS FOR THE MANUFACTURE OR SALE OF ITEMS) WITHOUT WRITTEN PERMISSION

UNLESS OTHERWISE SPECIFIED  
 DIMENSIONS ARE IN INCHES  
 TOLERANCES ON FINISH:RMS63  
 ANGLES:±1/2° FRACTIONS:±1/64  
 3 PLACE DECIMALS: ± .010  
 2 PLACE DECIMALS: ± .02  
 1 PLACE DECIMALS: ± .1  
 FILLETS: .005R MAX  
 REMOVE BURRS AND SHARP EDGES  
 TO .005 MAX. R OR CHAMFER

DRAFT	DEC	DATE
CHKD		12-17-02
PRD		
ENGR		
QA		



TITLE LIMITER OUTLINE

SIZE B CAGE CODE 1UJ73 DWG NO 400-F201

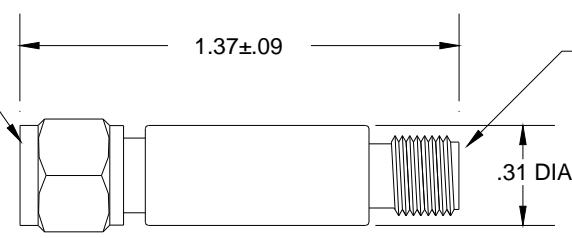
SCALE 2/1 SHEET 1 OF 1



One Tanguay Avenue  
 Nashua, New Hampshire 03063-1711  
 Phone: 603-459-5900 • Fax: 603-459-5901

REVISIONS				
ZONE	SYM	DESCRIPTION	DATE	APPROVED

SMA MALE PER  
MIL-STD-348 AND  
MIL-C-39012



SMA FEMALE  
MIL-STD-348 AND  
MIL-C-39012

SPECIFICATIONS

FREQUENCY RANGE:	2-18.0 GHz
INSERTION LOSS:	2.0 dB MAX
LEAKAGE POWER:	80 mWATTS
PEAK POWER	1000 WATTS
AVG POWER	5 WATTS
RECOVERY TIME	80 NANoseconds

NOTES:

- 1.0 MATERIAL:
  - 1.1 BODY: CORROSION RESISTANT  
STEEL TYPE 303, PER ASTM A582
  - 1.2 CONNECTORS: CORROSION RESISTANT  
STEEL PER MIL-STD-348 AND MIL-C-39012
- 2.0 FINISH:
  - 2.1 BODY: PASSIVATED PER QQ-P-35,  
TYPE II
  - 2.2 CONNECTORS: PASSIVATED IN  
ACCORDANCE WITH MIL-STD-348 AND MIL-C-39012

THESE DRAWINGS AND SPECIFICATIONS ARE THE PROPERTY OF RH LABS AND SHALL NOT BE REPRODUCED OR COPIED OR USED IN PART AS THE BASIS FOR THE MANUFACTURE OR SALE OF ITEM(S) WITHOUT WRITTEN PERMISSION

UNLESS OTHERWISE SPECIFIED  
DIMENSIONS ARE IN INCHES  
TOLERANCES ON FINISH: RMS E3  
ANGLES: ±1/2° FRACTIONS: ±1/64  
3 PLACE DECIMALS: ± .010  
2 PLACE DECIMALS: ± .01  
1 PLACE DECIMALS: ± .1  
FILLETS: .005R MAX  
REMOVE BURRS AND SHARP EDGES  
TO .005 MAX. R OR CHAMFER

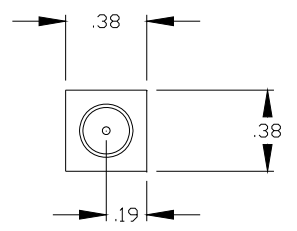
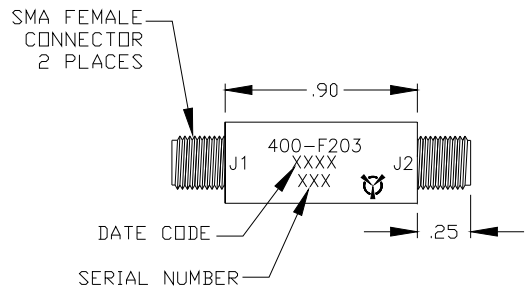
DRAFT	MRG	DATE
CHKD		11-5-02
PROD		
ENGR		
QA		

TITLE		
<b>LIMITER OUTLINE</b>		
SIZE	CAGE CODE	DWG NO
<b>B</b>	1UJ73	<b>400-F202</b>
SCALE 3X	SHEET 1 OF 1	



One Tanguay Avenue  
Nashua, New Hampshire 03063-1711  
Phone: 603-459-5900 • Fax: 603-459-5901

REVISIONS				
ZONE	SYM	DESCRIPTION	DATE	APPROVED



SPECIFICATIONS

FREQUENCY RANGE: 2-18.0 GHz

INSERTION LOSS: 2.0 dB MAX

LEAKAGE POWER: 80 mWATTS

PEAK POWER 1000 WATTS

AVG POWER 5 WATTS

RECOVERY TIME 80 NANoseconds

- NOTES:
- FINISH: WASH PRIMER PER DOD-P-15328D  
PRIMER PER MIL-P-23377D  
PAINT PER MIL-C-22750  
COLOR :BLUE
  - MARKING: BLACK EPOXY INK .06 HIGH PER MIL-STD- 130

THESE DRAWINGS AND SPECIFICATIONS ARE THE PROPERTY OF RH LABS AND SHALL NOT BE REPRODUCED OR COPIED OR USED IN PART AS THE BASIS FOR THE MANUFACTURE OR SALE OF ITEMS) WITHOUT WRITTEN PERMISSION

UNLESS OTHERWISE SPECIFIED  
DIMENSIONS ARE IN INCHES  
TOLERANCES ON FINISH: RMS63  
ANGLES: 1/2" FRACTIONS: 1/64  
3 PLACE DECIMALS: ± .010  
2 PLACE DECIMALS: ± .02  
1 PLACE DECIMALS: ± .1  
FILLET: .005R MAX  
REMOVE BURRS AND SHARP EDGES  
TO .005 MAX. R OR CHAMFER

DRAFT	DEC	DATE	12-17-02
CHKD			
PRD			
ENGR			
QA			



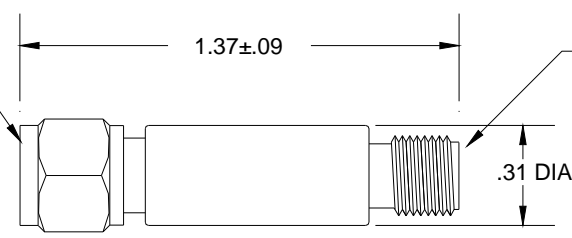
TITLE		LIMITER OUTLINE	
SIZE	CAGE CODE	DWG NO	400-F203
B	1UJ73		
SCALE	2/1		SHEET 1 OF 1



One Tanguay Avenue  
Nashua, New Hampshire 03063-1711  
Phone: 603-459-5900 • Fax: 603-459-5901

REVISIONS				
ZONE	SYM	DESCRIPTION	DATE	APPROVED

SMA MALE PER  
MIL-STD-348 AND  
MIL-C-39012



SMA FEMALE  
MIL-STD-348 AND  
MIL-C-39012

**SPECIFICATIONS**

FREQUENCY RANGE:	2-18.0 GHz
INSERTION LOSS:	2.5 dB MAX
LEAKAGE POWER:	50 mWATTS
PEAK POWER	1000 WATTS
AVG POWER	10 WATTS
RECOVERY TIME	400 NANoseconds

**NOTES:**

- 1.0 MATERIAL:
  - 1.1 BODY: CORROSION RESISTANT  
STEEL TYPE 303, PER ASTM A582
  - 1.2 CONNECTORS: CORROSION RESISTANT  
STEEL PER MIL-STD-348 AND MIL-C-39012
- 2.0 FINISH:
  - 2.1 BODY: PASSIVATED PER QQ-P-35,  
TYPE II
  - 2.2 CONNECTORS: PASSIVATED IN  
ACCORDANCE WITH MIL-STD-348 AND MIL-C-39012

THESE DRAWINGS AND SPECIFICATIONS ARE THE PROPERTY OF RH LABS AND SHALL NOT BE REPRODUCED OR COPIED OR USED IN PART AS THE BASIS FOR THE MANUFACTURE OR SALE OF ITEM(S) WITHOUT WRITTEN PERMISSION

UNLESS OTHERWISE SPECIFIED  
DIMENSIONS ARE IN INCHES  
TOLERANCES ON FINISH: RMS E3  
ANGLES: ±1/2° FRACTIONS: ±1/64  
3 PLACE DECIMALS: ± .010  
2 PLACE DECIMALS: ± .01  
1 PLACE DECIMALS: ± .1  
FILLETS: .005R MAX  
REMOVE BURRS AND SHARP EDGES  
TO .005 MAX. R OR CHAMFER

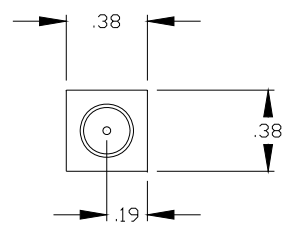
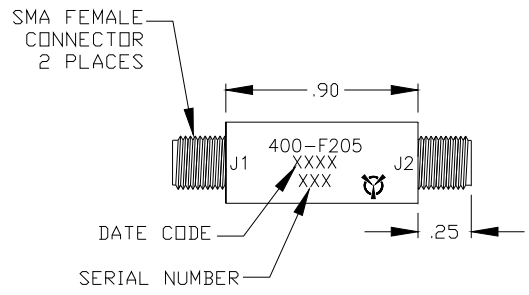
DRAFT	MRG	DATE
CHKD		11-05-02
PROD		
ENGR		
QA		

TITLE		
<b>LIMITER OUTLINE</b>		
SIZE	CAGE CODE	DWG NO
<b>B</b>	1UJ73	<b>400-F204</b>
SCALE 3X	SHEET 1 OF 1	



One Tanguay Avenue  
Nashua, New Hampshire 03063-1711  
Phone: 603-459-5900 • Fax: 603-459-5901

REVISIONS				
ZONE	SYM	DESCRIPTION	DATE	APPROVED



SPECIFICATIONS

FREQUENCY RANGE: 2-18.0 GHz

INSERTION LOSS: 2.5 dB MAX

LEAKAGE POWER: 50 mWATTS

PEAK POWER 1000 WATTS

AVG POWER 10 WATTS

RECOVERY TIME 400 NANoseconds

- NOTES:
- FINISH: WASH PRIMER PER DOD-P-15328D  
PRIMER PER MIL-P-23377D  
PAINT PER MIL-C-22750  
COLOR :BLUE
  - MARKING: BLACK EPOXY INK .06 HIGH PER MIL-STD- 130

THESE DRAWINGS AND SPECIFICATIONS ARE THE PROPERTY OF RH LABS AND SHALL NOT BE REPRODUCED OR COPIED OR USED IN PART AS THE BASIS FOR THE MANUFACTURE OR SALE OF ITEM(S) WITHOUT WRITTEN PERMISSION

UNLESS OTHERWISE SPECIFIED  
DIMENSIONS ARE IN INCHES  
TOLERANCES ON FINISH: RMS63  
ANGLES: 81/2° FRACTIONS: 1/64  
3 PLACE DECIMALS: ± .010  
2 PLACE DECIMALS: ± .02  
1 PLACE DECIMALS: ± .1  
FILLET: .005R MAX  
REMOVE BURRS AND SHARP EDGES TO .005 MAX. R OR CHAMFER

DRAFT	DEC	DATE	12-17-02
CHKD			
PRD			
ENGR			
QA			

			TITLE		LIMITER OUTLINE	
SIZE	CAGE CODE	DWG NO	400-F205			
B	1UJ73		SCALE	2/1	SHEET	1 OF 1

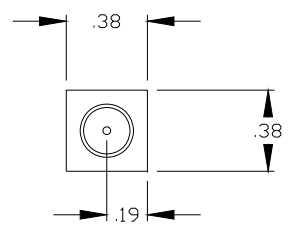
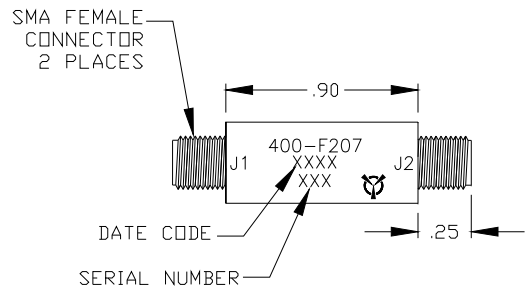


One Tanguay Avenue  
Nashua, New Hampshire 03063-1711  
Phone: 603-459-5900 • Fax: 603-459-5901





REVISIONS				
ZONE	SYM	DESCRIPTION	DATE	APPROVED



SPECIFICATIONS

FREQUENCY RANGE: 2-18.0 GHz

INSERTION LOSS: 2.8 dB MAX

LEAKAGE POWER: 20 mWATTS

PEAK POWER 300 WATTS

AVG POWER 2 WATTS

RECOVERY TIME 300 NANoseconds

- NOTES:
- FINISH: WASH PRIMER PER DOD-P-15328D  
PRIMER PER MIL-P-23377D  
PAINT PER MIL-C-22750  
COLOR :BLUE
  - MARKING: BLACK EPOXY INK .06 HIGH PER MIL-STD- 130

THESE DRAWINGS AND SPECIFICATIONS ARE THE PROPERTY OF RH LABS AND SHALL NOT BE REPRODUCED OR COPIED OR USED IN PART AS THE BASIS FOR THE MANUFACTURE OR SALE OF ITEM(S) WITHOUT WRITTEN PERMISSION

UNLESS OTHERWISE SPECIFIED  
DIMENSIONS ARE IN INCHES  
TOLERANCES ON FINISH: RMS63  
ANGLES: 81/2° FRACTIONS: 1/64  
3 PLACE DECIMALS: ± .010  
2 PLACE DECIMALS: ± .02  
1 PLACE DECIMALS: ± .1  
FILLET: .005R MAX  
REMOVE BURRS AND SHARP EDGES TO .005 MAX. R OR CHAMFER

DRAFT	DEC	DATE
CHKD		12-17-02
PRD		
ENGR		
QA		



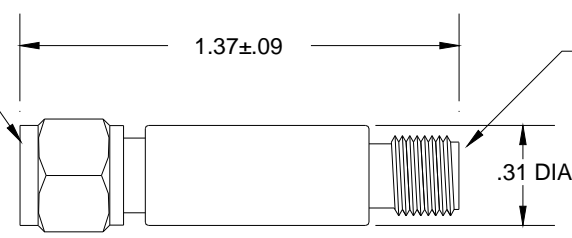
TITLE			LIMITER OUTLINE		
SIZE	CAGE CODE	DWG NO	400-F207		
B	1UJ73				
SCALE	2/1		SHEET 1 OF 1		



One Tanguay Avenue  
Nashua, New Hampshire 03063-1711  
Phone: 603-459-5900 • Fax: 603-459-5901

REVISIONS				
ZONE	SYM	DESCRIPTION	DATE	APPROVED

SMA MALE PER  
MIL-STD-348 AND  
MIL-C-39012



SMA FEMALE  
MIL-STD-348 AND  
MIL-C-39012

SPECIFICATIONS

FREQUENCY RANGE:	2-8.0 GHz
INSERTION LOSS:	1.6 dB MAX
LEAKAGE POWER:	100 mWATTS
PEAK POWER	2000 WATTS
AVG POWER	20 WATTS
RECOVERY TIME	600 NANoseconds

NOTES:

- 1.0 MATERIAL:
  - 1.1 BODY: CORROSION RESISTANT  
STEEL TYPE 303, PER ASTM A582
  - 1.2 CONNECTORS: CORROSION RESISTANT  
STEEL PER MIL-STD-348 AND MIL-C-39012
- 2.0 FINISH:
  - 2.1 BODY: PASSIVATED PER QQ-P-35,  
TYPE II
  - 2.2 CONNECTORS: PASSIVATED IN  
ACCORDANCE WITH MIL-STD-348 AND MIL-C-39012

THESE DRAWINGS AND SPECIFICATIONS ARE THE PROPERTY OF RH LABS AND SHALL NOT BE REPRODUCED OR COPIED OR USED IN PART AS THE BASIS FOR THE MANUFACTURE OR SALE OF ITEM(S) WITHOUT WRITTEN PERMISSION

UNLESS OTHERWISE SPECIFIED  
DIMENSIONS ARE IN INCHES  
TOLERANCES ON FINISH: RMS E3  
ANGLES: ±1/2° FRACTIONS: ±1/64  
3 PLACE DECIMALS: ± .010  
2 PLACE DECIMALS: ± .01  
1 PLACE DECIMALS: ± .1  
FILLETS: .005R MAX  
REMOVE BURRS AND SHARP EDGES  
TO .005 MAX. R OR CHAMFER

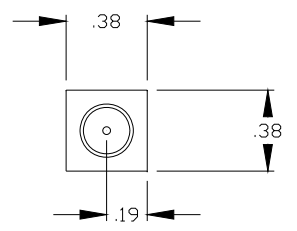
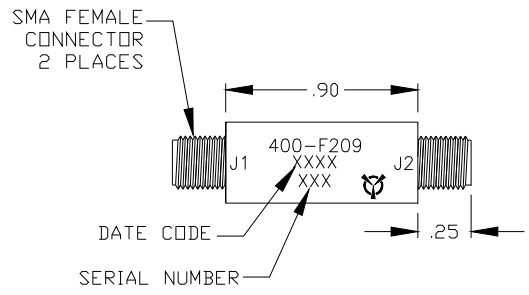
DRAFT	MRG	DATE
CHKD		11-5-02
PROD		
ENGR		
QA		

TITLE		
<b>LIMITER OUTLINE</b>		
SIZE	CAGE CODE	DWG NO
<b>B</b>	1UJ73	<b>400-F208</b>
SCALE 3X	SHEET 1 OF 1	



One Tanguay Avenue  
Nashua, New Hampshire 03063-1711  
Phone: 603-459-5900 • Fax: 603-459-5901

REVISIONS				
ZONE	SYM	DESCRIPTION	DATE	APPROVED



SPECIFICATIONS

FREQUENCY RANGE: 2-8.0 GHz

INSERTION LOSS: 1.6 dB MAX

LEAKAGE POWER: 100 mWATTS

PEAK POWER 2000 WATTS

AVG POWER 20 WATTS

RECOVERY TIME 600 NANoseconds

- NOTES:
- FINISH: WASH PRIMER PER DOD-P-15328D  
PRIMER PER MIL-P-23377D  
PAINT PER MIL-C-22750  
COLOR :BLUE
  - MARKING: BLACK EPOXY INK .06 HIGH PER MIL-STD- 130

<small>THESE DRAWINGS AND SPECIFICATIONS ARE THE PROPERTY OF RH LABS AND SHALL NOT BE REPRODUCED OR COPIED OR USED IN PART AS THE BASIS FOR THE MANUFACTURE OR SALE OF ITEMS) WITHOUT WRITTEN PERMISSION</small>					
<small>UNLESS OTHERWISE SPECIFIED DIMENSIONS ARE IN INCHES TOLERANCES ON FINISH: RMS63 ANGLES: 81/2° FRACTIONS: 1/64 3 PLACE DECIMALS: ± .010 2 PLACE DECIMALS: ± .02 1 PLACE DECIMALS: ± .1 FILLETS: .005R MAX REMOVE BURRS AND SHARP EDGES TO .005 MAX. R OR CHAMFER</small>			DRAFT DEC CHKD PRD ENGR QA	DATE 12-17-02     	TITLE LIMITER OUTLINE  SIZE B CAGE CODE 1UJ73 DWG NO 400-F209 SCALE 2/1 SHEET 1 OF 1



One Tanguay Avenue  
 Nashua, New Hampshire 03063-1711  
 Phone: 603-459-5900 • Fax: 603-459-5901