

STANDARD SWITCH CATALOG

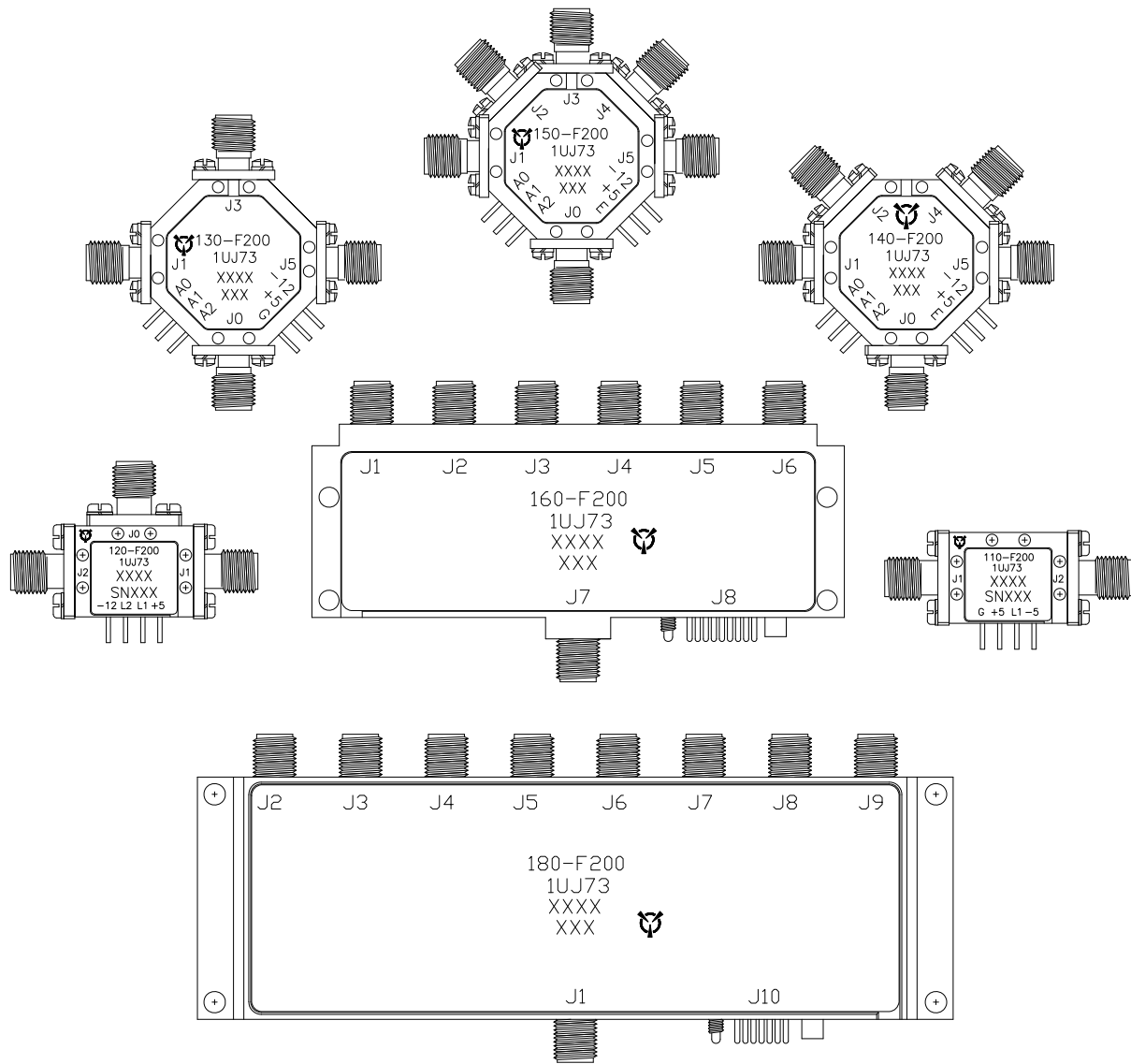
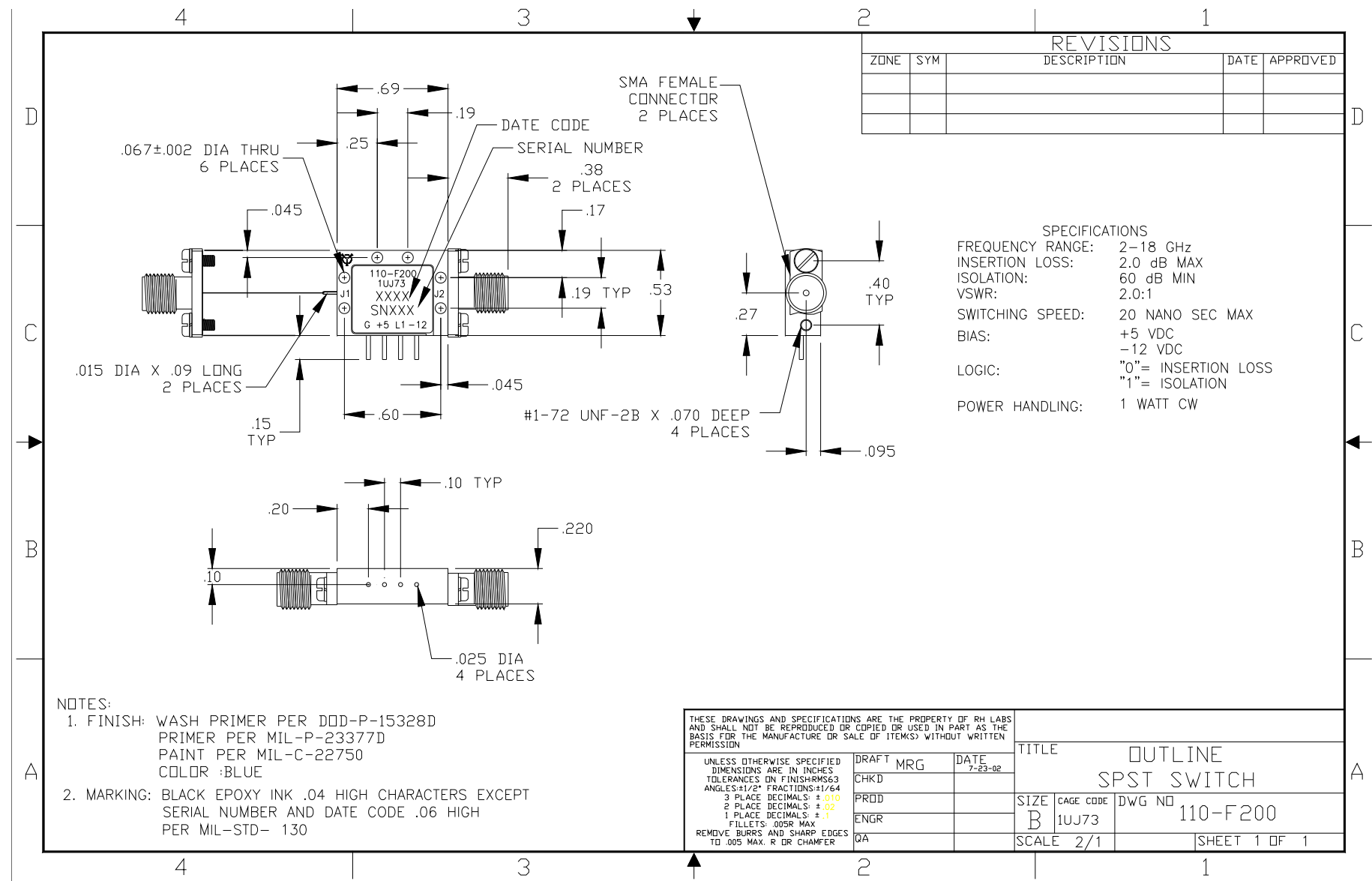
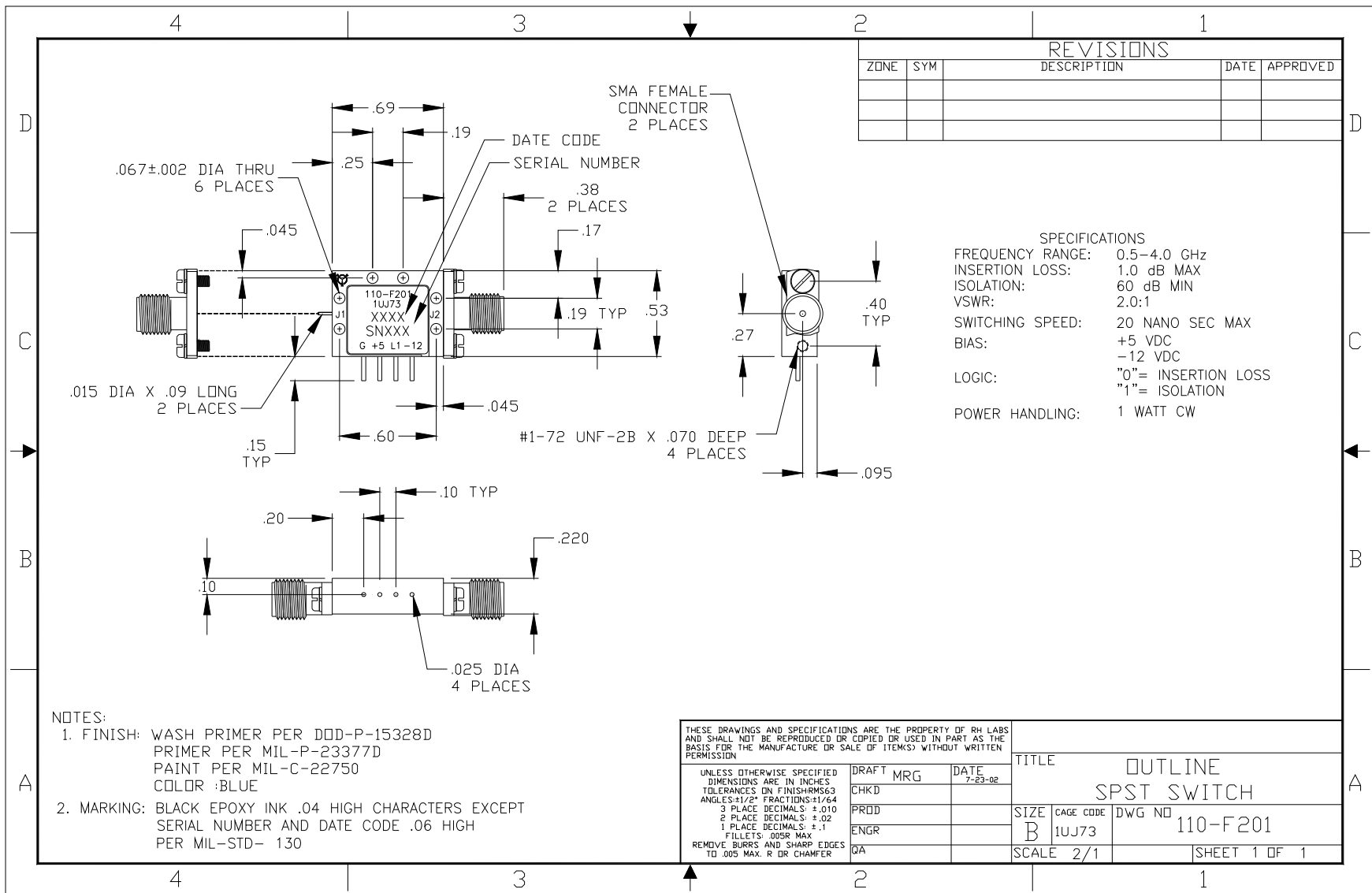
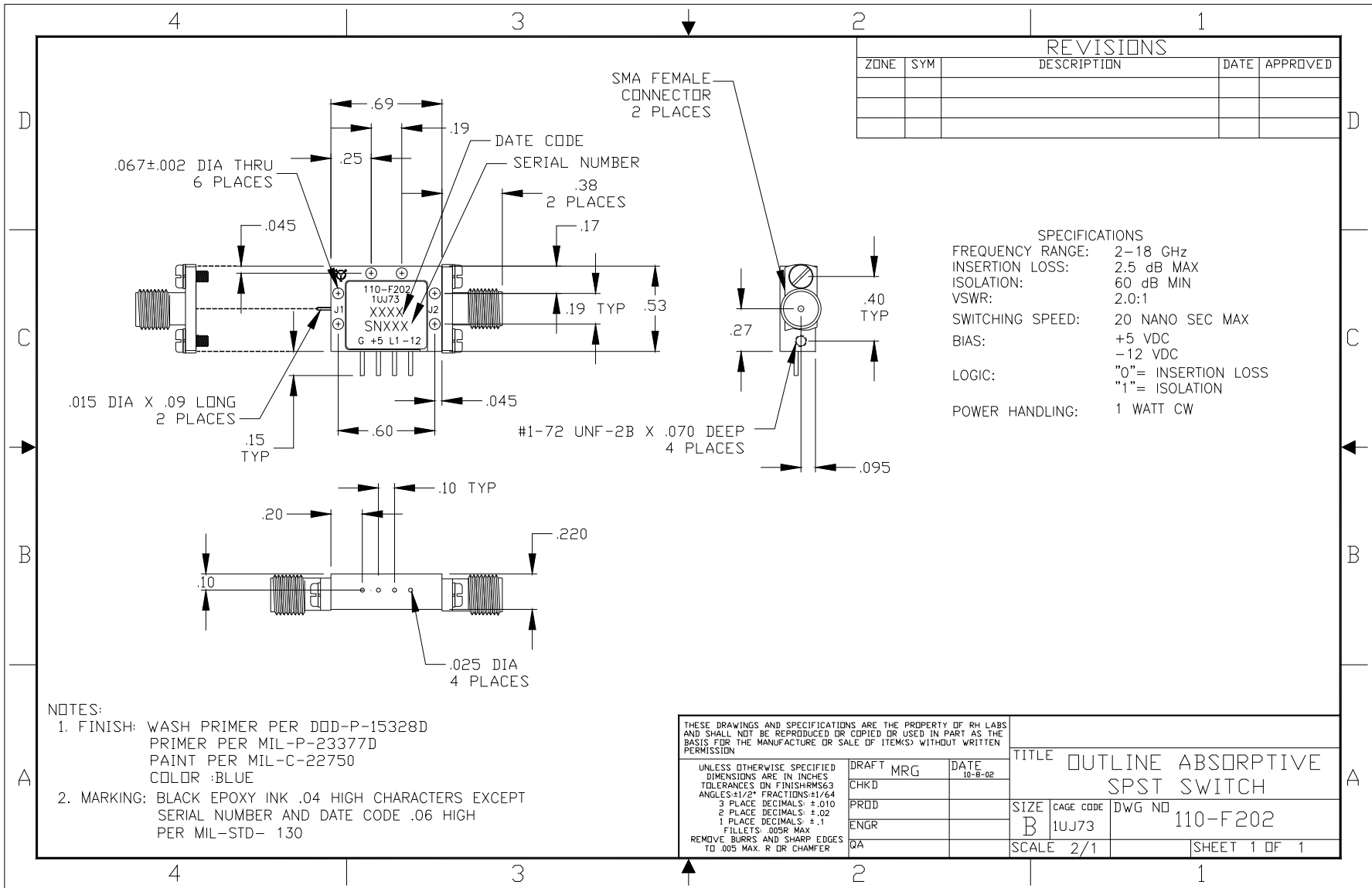


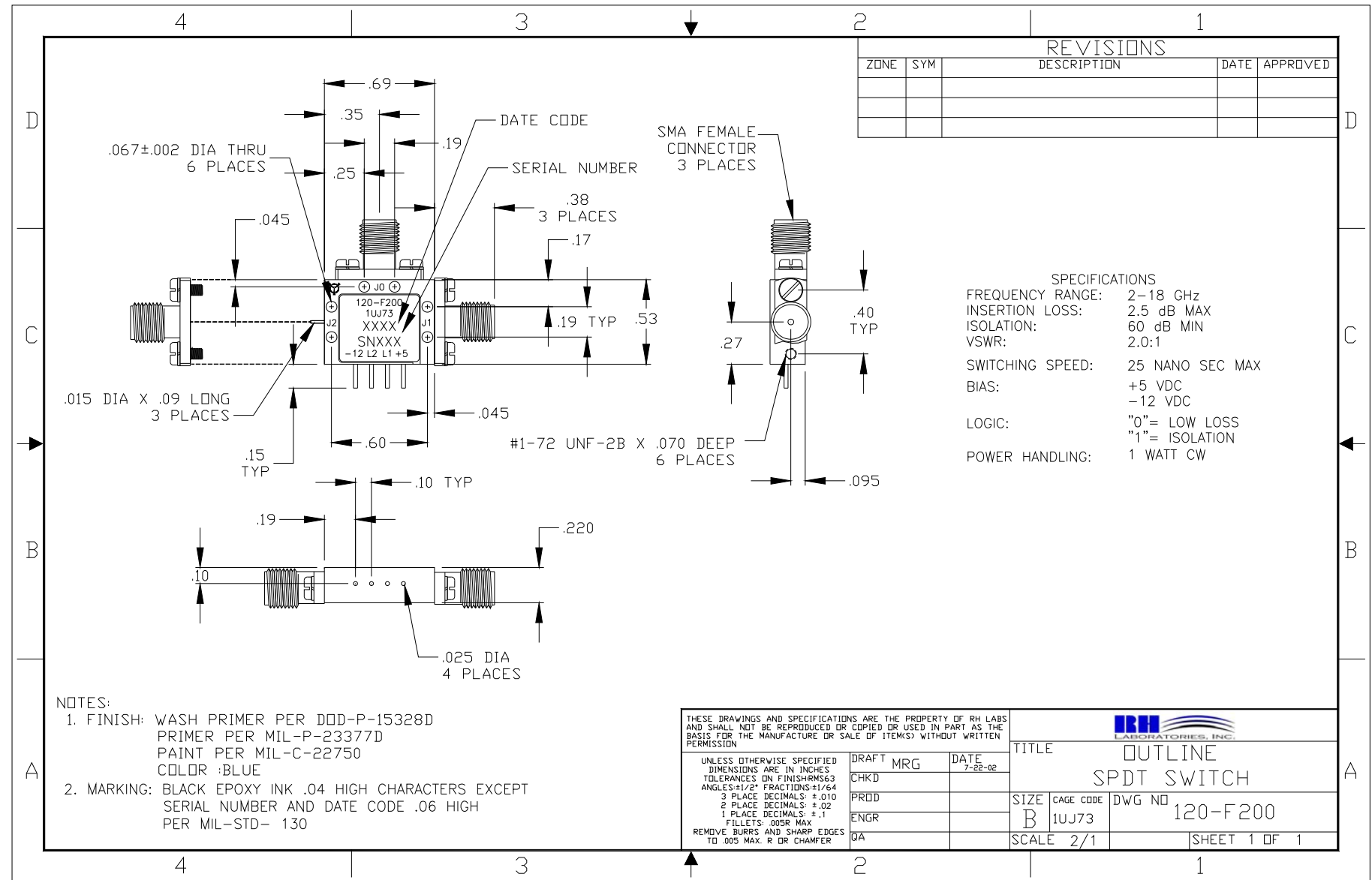
TABLE OF CONTENT

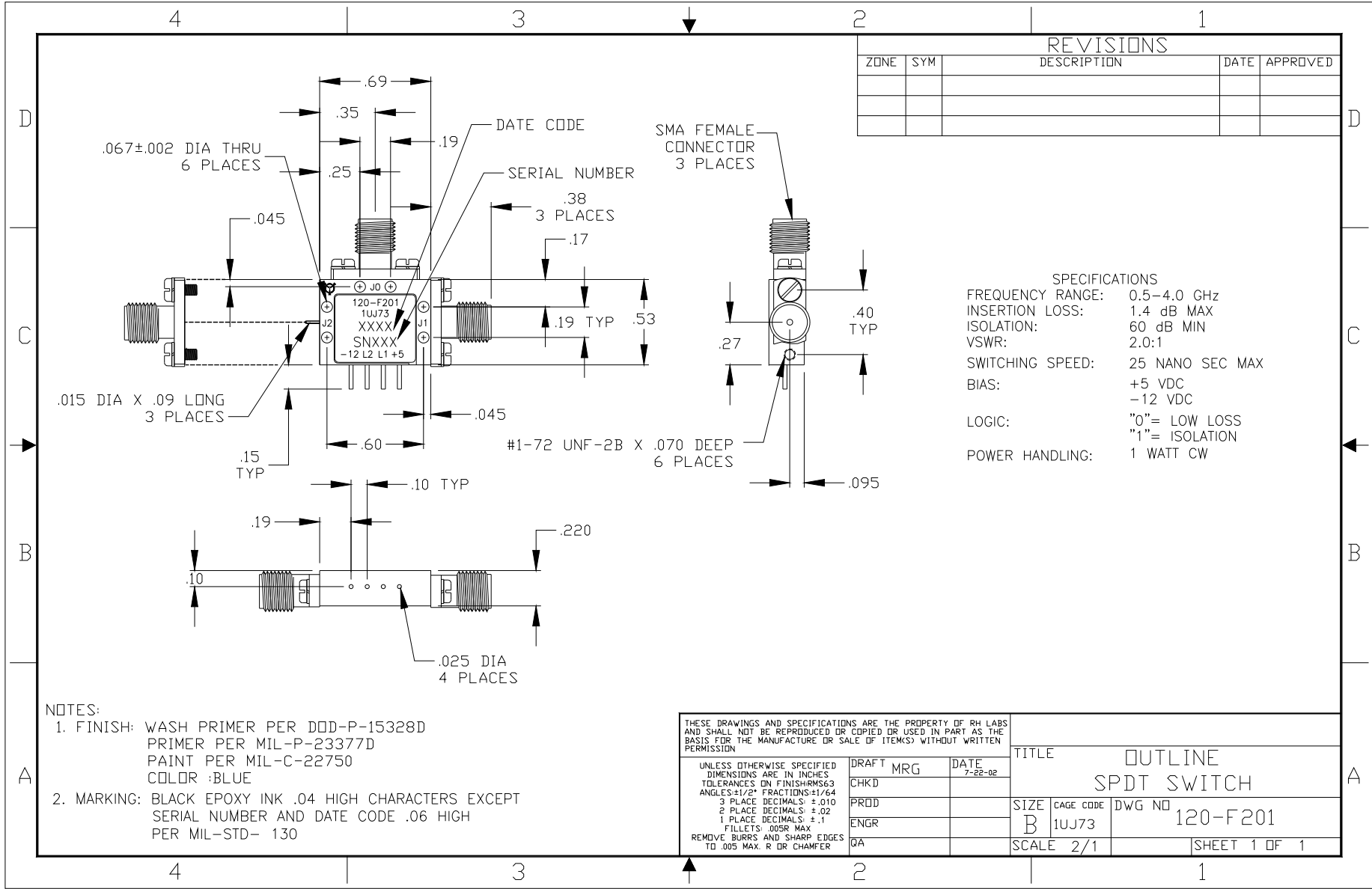
Page Number	Model Number	Function	Frequency Range	
4	110-F200	SPST	2-18 GHz	Low Loss
5	110-F201	SPST	0.5 – 4 GHz	Low Loss
6	110-F202	SPST	2-18 GHz	Absorptive
7	110-F203	SPST	0.5 – 4 GHz	Absorptive
8	120-F200	SPDT	2-18 GHz	Low Loss
9	120-F201	SPDT	0.5 – 4 GHz	Low Loss
10	120-F202	SPDT	2-18 GHz	Absorptive
11	120-F203	SPDT	0.5 – 4 GHz	Absorptive
12	130-F200	SP3T	2-18 GHz	Low Loss
13	130-F201	SP3T	0.5 – 4 GHz	Low Loss
14	130-F202	SP3T	2-18 GHz	Absorptive
15	130-F203	SP3T	0.5 – 4 GHz	Absorptive
16	140-F200	SP4T	2-18 GHz	Low Loss
17	140-F201	SP4T	0.5 – 4 GHz	Low Loss
18	140-F202	SP4T	2-18 GHz	Absorptive
19	140-F203	SP4T	0.5 – 4 GHz	Absorptive
20	150-F200	SP5T	2-18 GHz	Low Loss
21	150-F201	SP5T	0.5 – 4 GHz	Low Loss
22	150-F202	SP5T	2-18 GHz	Absorptive
23	150-F203	SP5T	0.5 – 4 GHz	Absorptive
24	160-F200	SP6T	2-18 GHz	Absorptive
25	180-F200	SP8T	0.5-18 GHz	Absorptive











REVISIONS				
ZONE	SYM	DESCRIPTION	DATE	APPROVED

SPECIFICATIONS

FREQUENCY RANGE: 0.5-4.0 GHz
 INSERTION LOSS: 1.4 dB MAX
 ISOLATION: 60 dB MIN
 VSWR: 2.0:1
 SWITCHING SPEED: 25 NANO SEC MAX
 BIAS: +5 VDC
 -12 VDC
 LOGIC: "0"= LOW LOSS
 "1"= ISOLATION
 POWER HANDLING: 1 WATT CW

- NOTES:**
1. FINISH: WASH PRIMER PER DOD-P-15328D
 PRIMER PER MIL-P-23377D
 PAINT PER MIL-C-22750
 COLOR :BLUE
 2. MARKING: BLACK EPOXY INK .04 HIGH CHARACTERS EXCEPT
 SERIAL NUMBER AND DATE CODE .06 HIGH
 PER MIL-STD- 130

THESE DRAWINGS AND SPECIFICATIONS ARE THE PROPERTY OF RH LABS AND SHALL NOT BE REPRODUCED OR COPIED OR USED IN PART AS THE BASIS FOR THE MANUFACTURE OR SALE OF ITEMS) WITHOUT WRITTEN PERMISSION

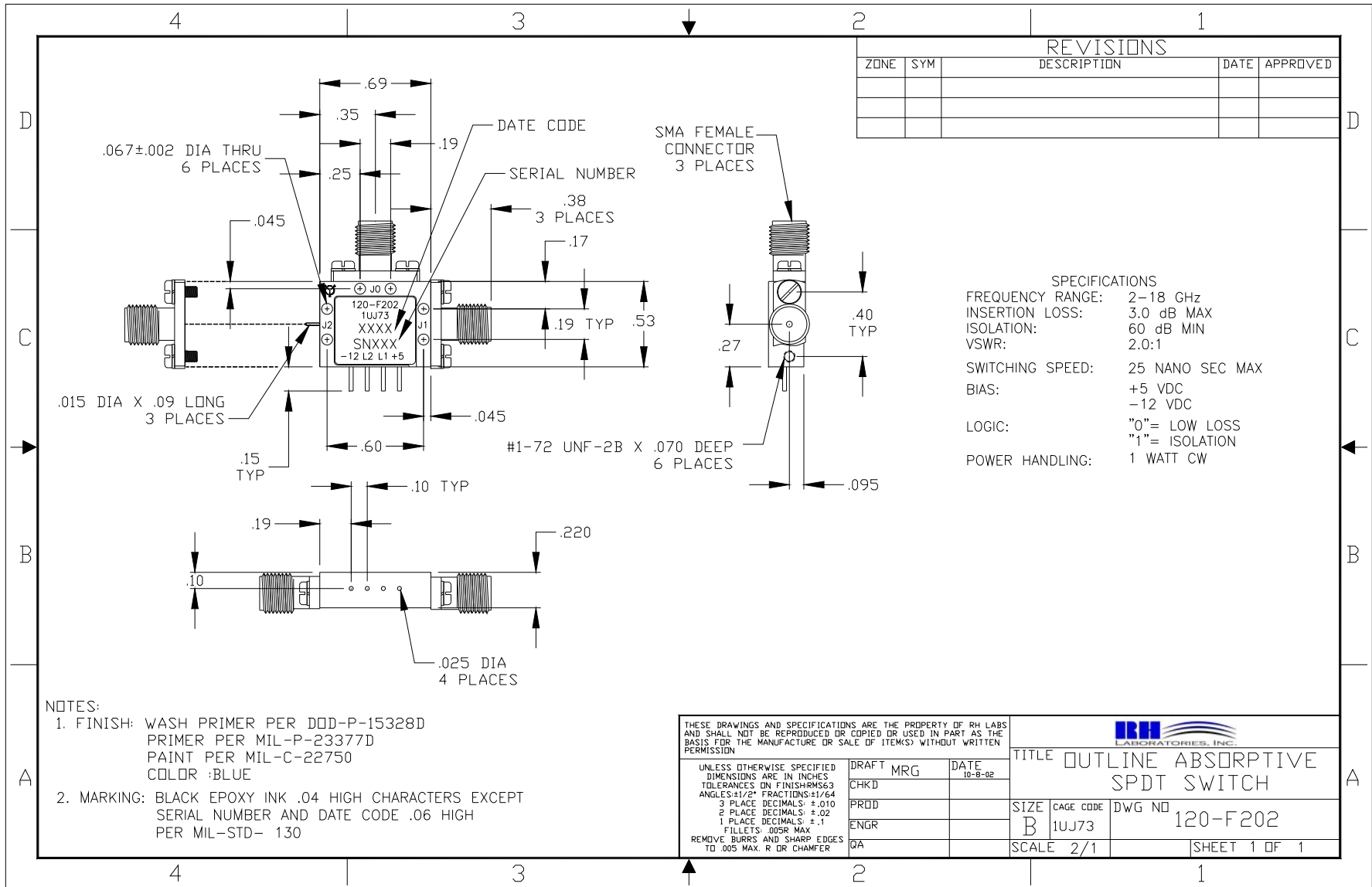
UNLESS OTHERWISE SPECIFIED DIMENSIONS ARE IN INCHES TOLERANCES ON FINISH RMS63 ANGLES ±1/2° FRACTIONS ±1/64 3 PLACE DECIMALS: ±.010 2 PLACE DECIMALS: ±.02 1 PLACE DECIMALS: ±.1 FILLETS: .005R MAX REMOVE BURRS AND SHARP EDGES TO .005 MAX. R OR CHAMFER

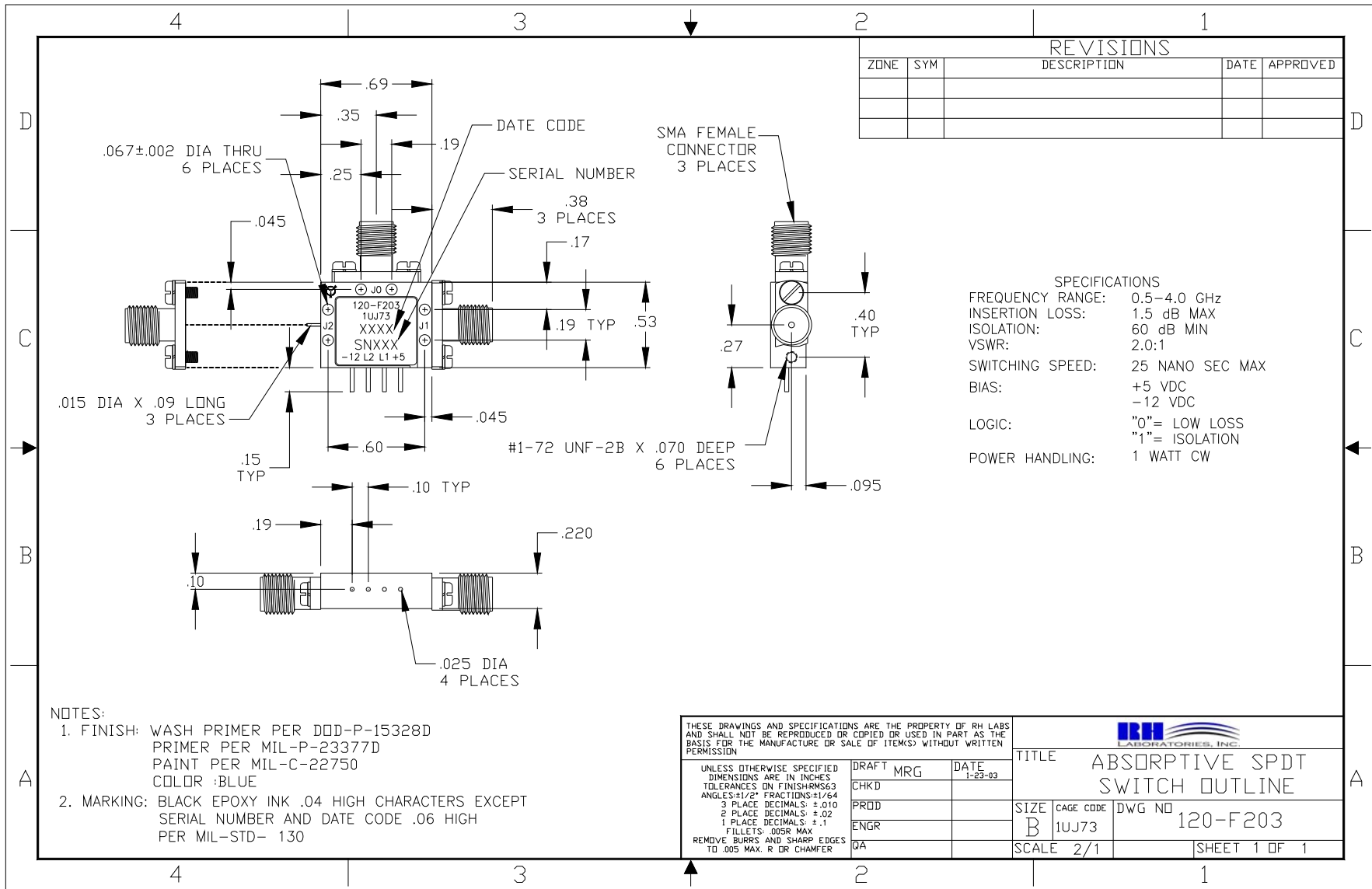
DRAFT	MRG	DATE
CHKD		7-22-02
PRD		
ENGR		
QA		

TITLE			OUTLINE	
			SPDT SWITCH	
SIZE	CAGE CODE	DWG NO		
B	1UJ73	120-F201		
SCALE	2/1		SHEET	1 OF 1



One Tanguay Avenue
 Nashua, New Hampshire 03063-1711
 Phone: 603-459-5900 • Fax: 603-459-5901





REVISIONS				
ZONE	SYM	DESCRIPTION	DATE	APPROVED

SPECIFICATIONS
 FREQUENCY RANGE: 0.5-4.0 GHz
 INSERTION LOSS: 1.5 dB MAX
 ISOLATION: 60 dB MIN
 VSWR: 2.0:1
 SWITCHING SPEED: 25 NANO SEC MAX
 BIAS: +5 VDC
 -12 VDC
 LOGIC: "0"= LOW LOSS
 "1"= ISOLATION
 POWER HANDLING: 1 WATT CW

- NOTES:
1. FINISH: WASH PRIMER PER DOD-P-15328D
 PRIMER PER MIL-P-23377D
 PAINT PER MIL-C-22750
 COLOR :BLUE
 2. MARKING: BLACK EPOXY INK .04 HIGH CHARACTERS EXCEPT
 SERIAL NUMBER AND DATE CODE .06 HIGH
 PER MIL-STD- 130

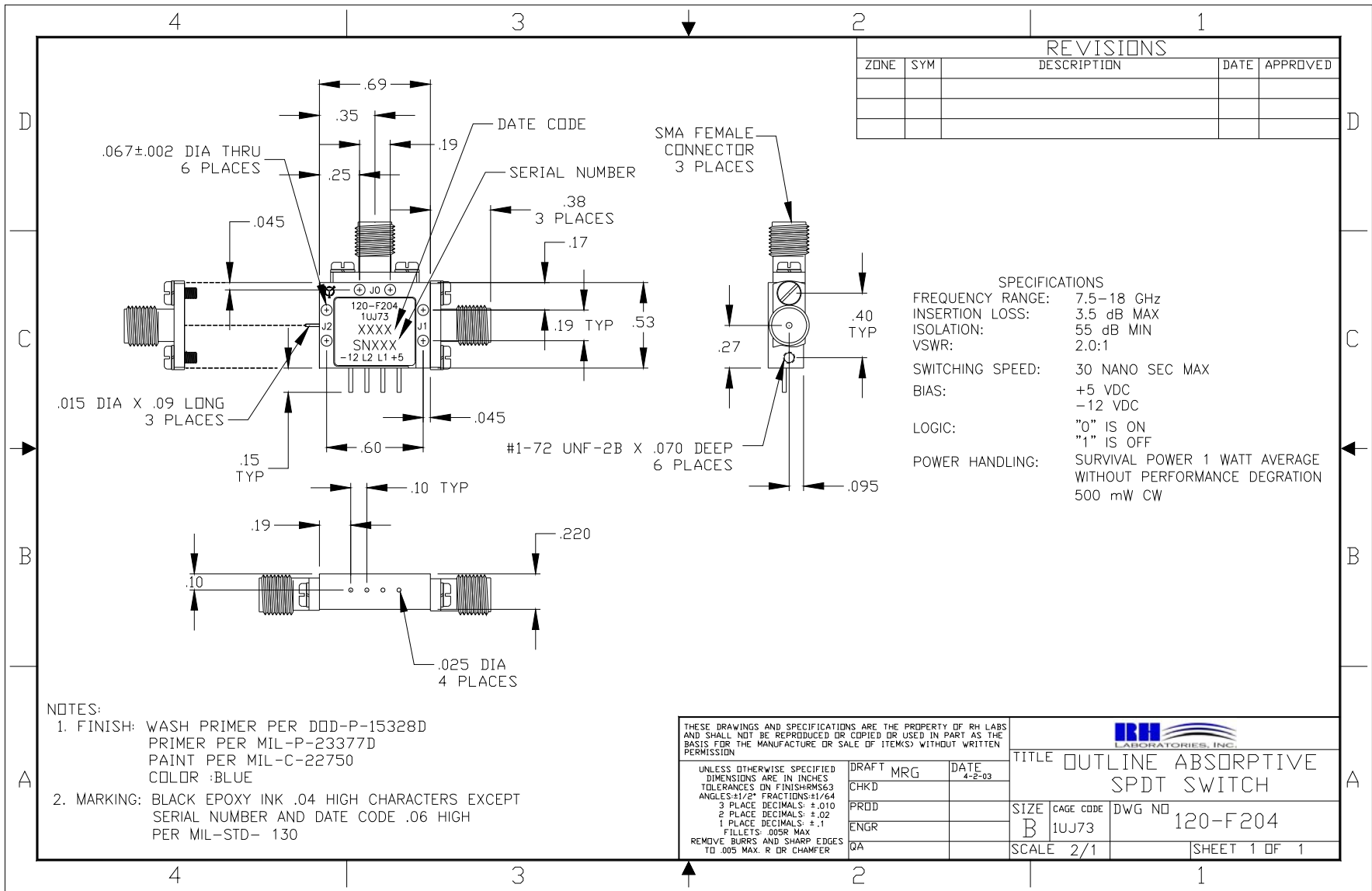
THESE DRAWINGS AND SPECIFICATIONS ARE THE PROPERTY OF RH LABS AND SHALL NOT BE REPRODUCED OR COPIED OR USED IN PART AS THE BASIS FOR THE MANUFACTURE OR SALE OF ITEMS WITHOUT WRITTEN PERMISSION

UNLESS OTHERWISE SPECIFIED DIMENSIONS ARE IN INCHES
 TOLERANCES ON FINISHES: .563
 ANGLES: 1/2" FRACTIONS: 1/64
 3 PLACE DECIMALS: ±.010
 2 PLACE DECIMALS: ±.02
 1 PLACE DECIMALS: ±.1
 FILLETS: .005R MAX
 REMOVE BURRS AND SHARP EDGES TO .005 MAX. R DR CHAMFER

DRAFT		MRG	DATE	1-23-03		TITLE		ABSORPTIVE SPDT SWITCH OUTLINE	
CHKD	PRDD	ENGR	QA	SIZE	B	CAGE CODE	1UJ73	DWG NO	120-F203
SCALE				2/1		SHEET 1 OF 1			



One Tanguay Avenue
 Nashua, New Hampshire 03063-1711
 Phone: 603-459-5900 • Fax: 603-459-5901



REVISIONS				
ZONE	SYM	DESCRIPTION	DATE	APPROVED

SPECIFICATIONS

FREQUENCY RANGE: 7.5-18 GHz
 INSERTION LOSS: 3.5 dB MAX
 ISOLATION: 55 dB MIN
 VSWR: 2.0:1

SWITCHING SPEED: 30 NANO SEC MAX
 BIAS: +5 VDC
 -12 VDC

LOGIC: "0" IS ON
 "1" IS OFF

POWER HANDLING: SURVIVAL POWER 1 WATT AVERAGE
 WITHOUT PERFORMANCE DEGRATION
 500 mW CW

- NOTES:
- FINISH: WASH PRIMER PER DOD-P-15328D
 PRIMER PER MIL-P-23377D
 PAINT PER MIL-C-22750
 COLOR :BLUE
 - MARKING: BLACK EPOXY INK .04 HIGH CHARACTERS EXCEPT
 SERIAL NUMBER AND DATE CODE .06 HIGH
 PER MIL-STD- 130

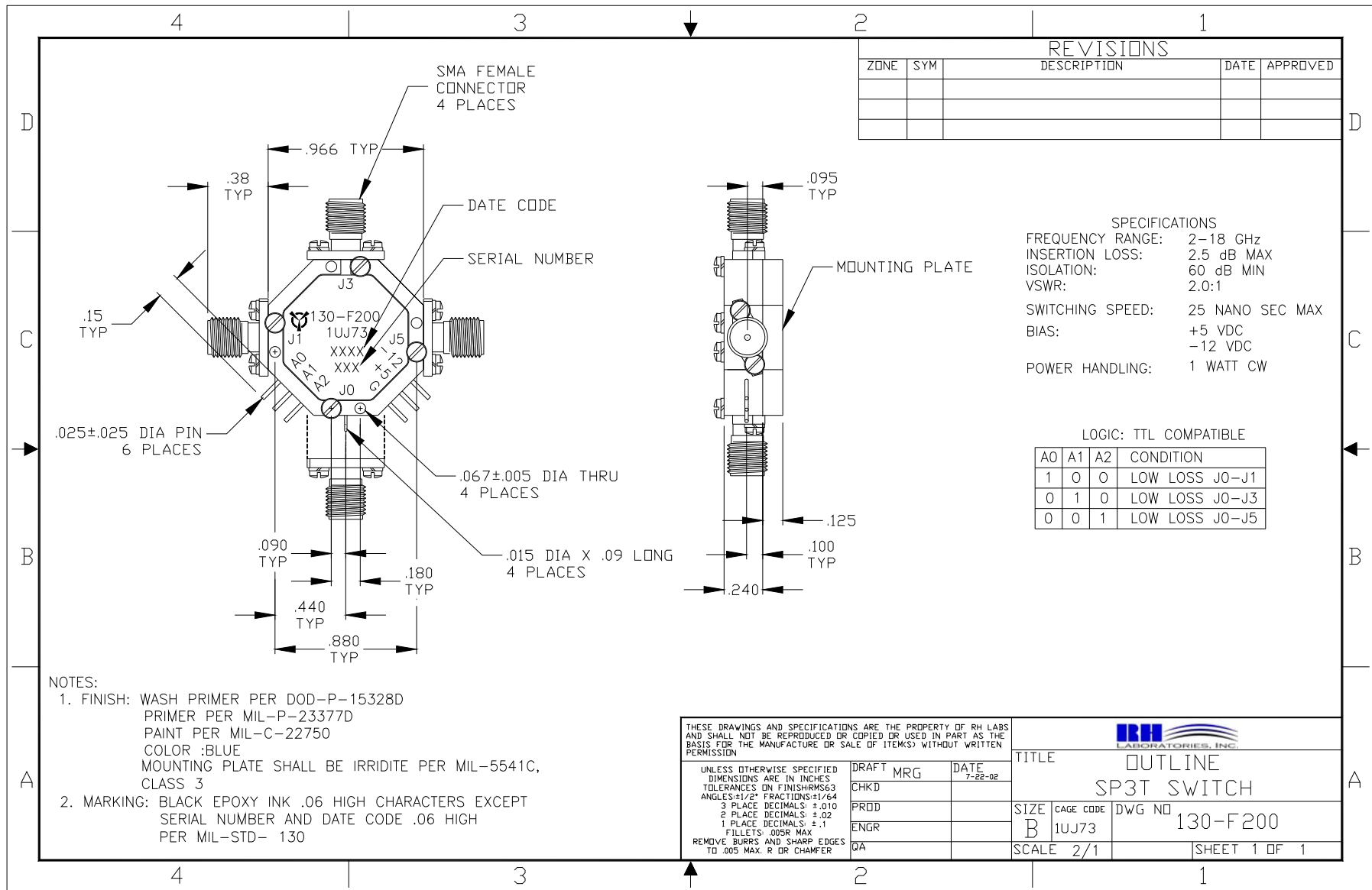
THESE DRAWINGS AND SPECIFICATIONS ARE THE PROPERTY OF RH LABS AND SHALL NOT BE REPRODUCED OR COPIED OR USED IN PART AS THE BASIS FOR THE MANUFACTURE OR SALE OF ITEMS) WITHOUT WRITTEN PERMISSION

UNLESS OTHERWISE SPECIFIED DIMENSIONS ARE IN INCHES
 TOLERANCES ON FINISHES: 63
 ANGLES: 1/2° FRACTIONS: ±1/64
 3 PLACE DECIMALS: ±.010
 2 PLACE DECIMALS: ±.02
 1 PLACE DECIMALS: ±.1
 FILLETS: .008R MAX
 REMOVE BURRS AND SHARP EDGES TO .005 MAX. R OR CHAMFER

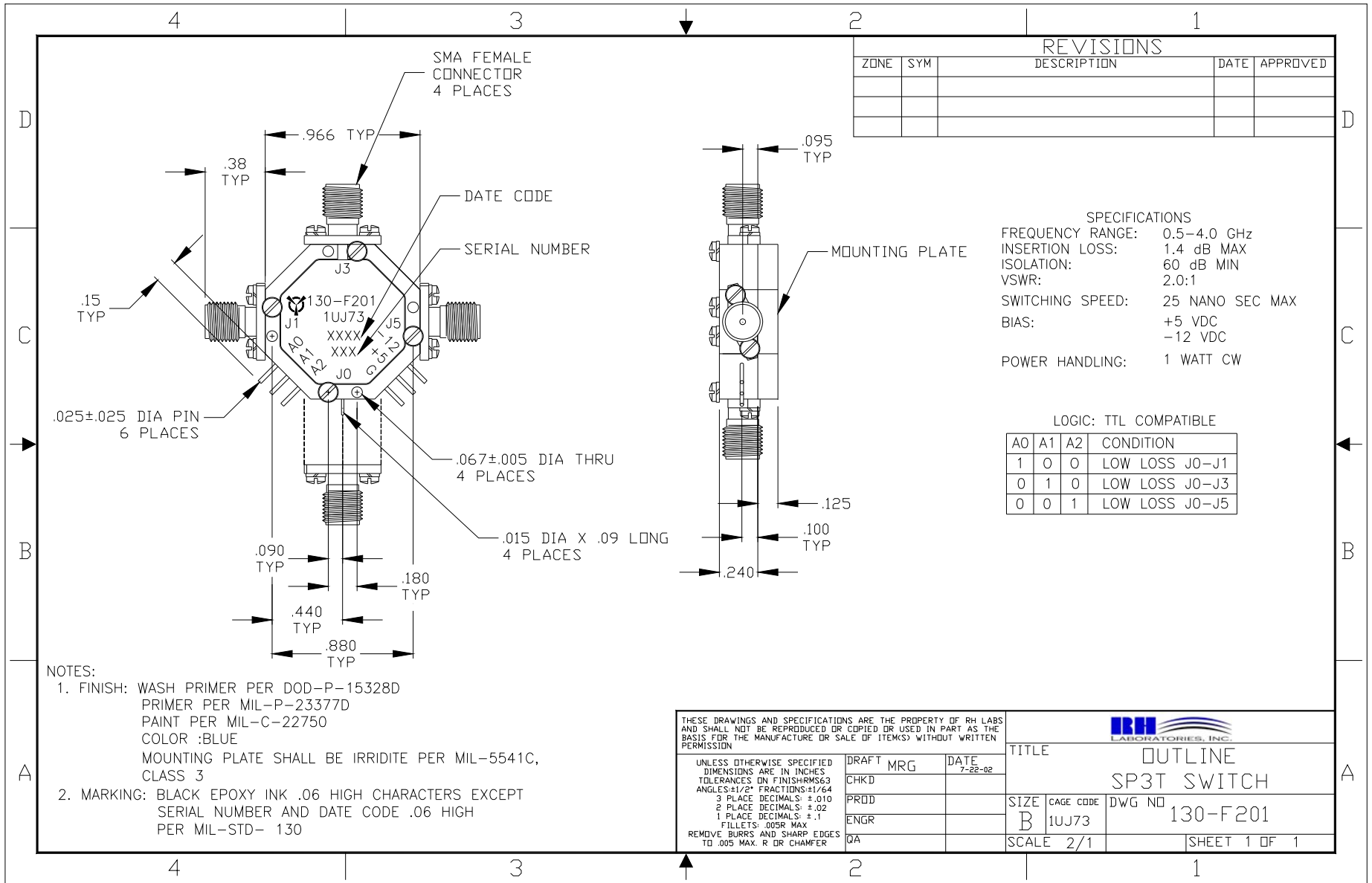
DRAFT		MRG	DATE	4-2-03	
CHKD					
PROD					
ENGR					
QA					
TITLE	OUTLINE ABSORPTIVE SPDT SWITCH				
SIZE	B	CAGE CODE	1UJ73	DWG NO	120-F204
SCALE	2/1		SHEET 1 OF 1		



One Tanguay Avenue
 Nashua, New Hampshire 03063-1711
 Phone: 603-459-5900 • Fax: 603-459-5901



One Tanguay Avenue
 Nashua, New Hampshire 03063-1711
 Phone: 603-459-5900 • Fax: 603-459-5901



REVISIONS				
ZONE	SYM	DESCRIPTION	DATE	APPROVED

SPECIFICATIONS
 FREQUENCY RANGE: 0.5-4.0 GHz
 INSERTION LOSS: 1.4 dB MAX
 ISOLATION: 60 dB MIN
 VSWR: 2.0:1
 SWITCHING SPEED: 25 NANO SEC MAX
 BIAS: +5 VDC
 -12 VDC
 POWER HANDLING: 1 WATT CW

LOGIC: TTL COMPATIBLE

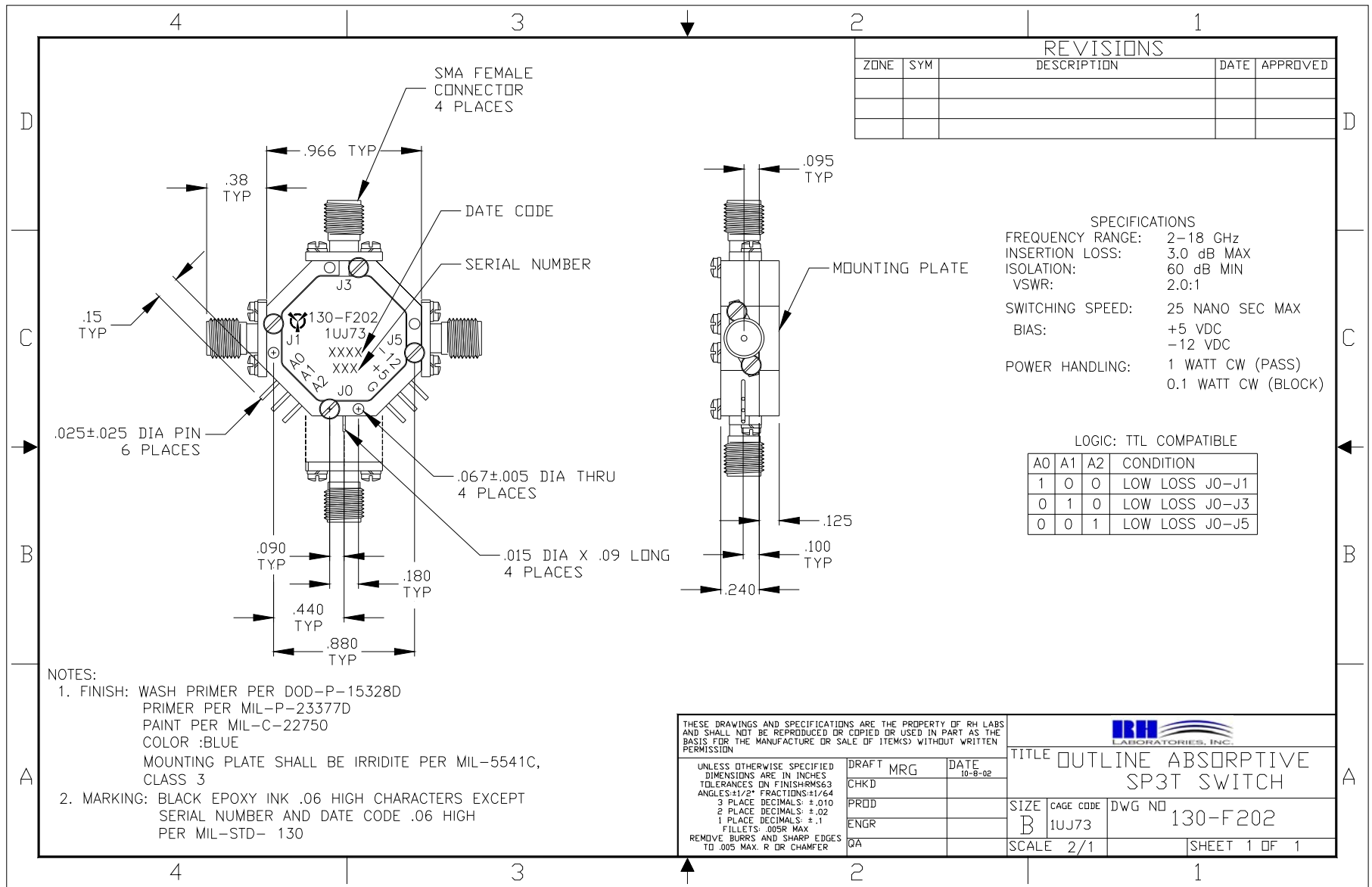
A0	A1	A2	CONDITION
1	0	0	LOW LOSS J0-J1
0	1	0	LOW LOSS J0-J3
0	0	1	LOW LOSS J0-J5

- NOTES:
- FINISH: WASH PRIMER PER DOD-P-15328D
 PRIMER PER MIL-P-23377D
 PAINT PER MIL-C-22750
 COLOR :BLUE
 MOUNTING PLATE SHALL BE IRRIDITE PER MIL-5541C, CLASS 3
 - MARKING: BLACK EPOXY INK .06 HIGH CHARACTERS EXCEPT SERIAL NUMBER AND DATE CODE .06 HIGH PER MIL-STD- 130

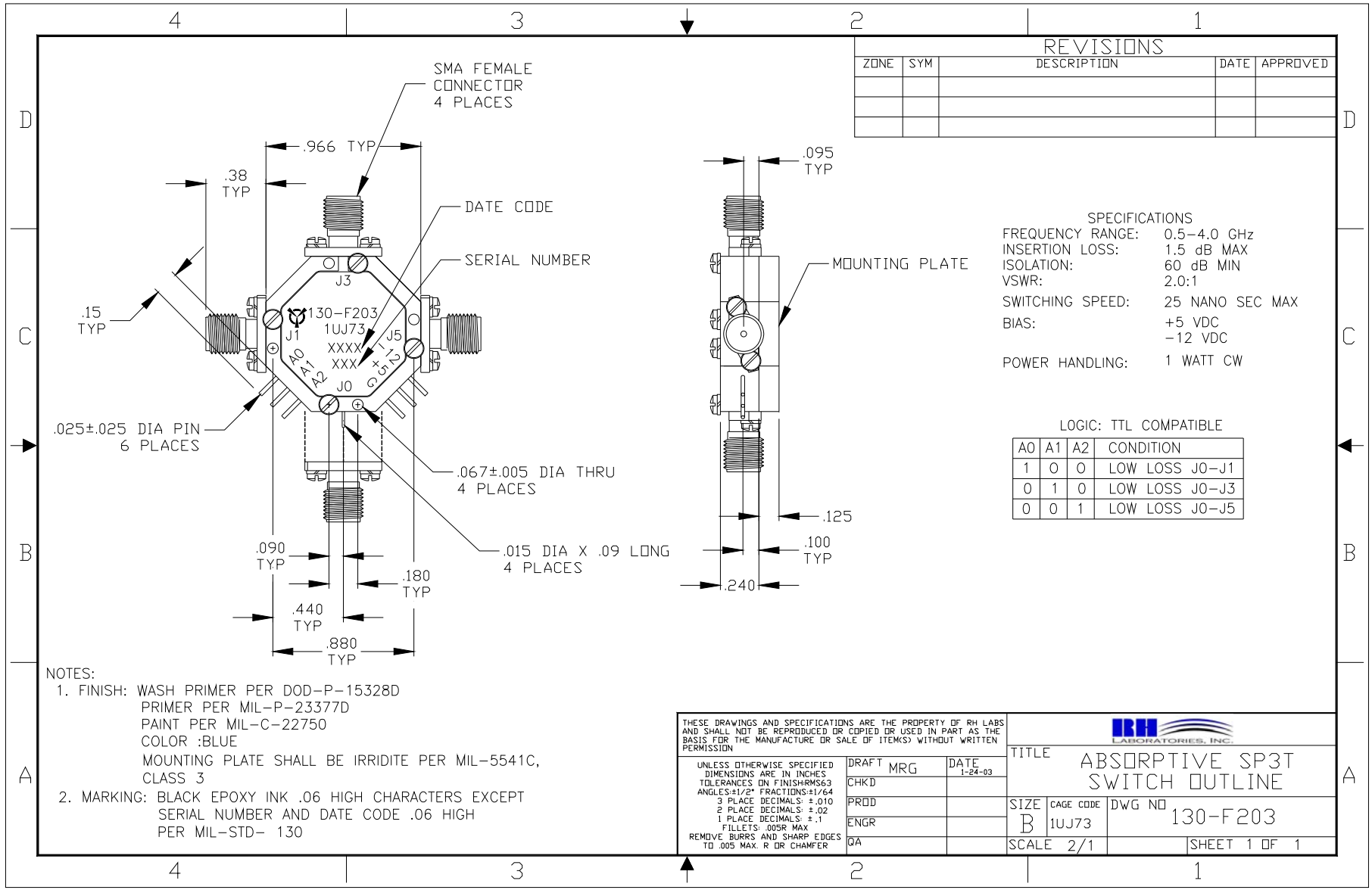
<small>THESE DRAWINGS AND SPECIFICATIONS ARE THE PROPERTY OF RH LABS AND SHALL NOT BE REPRODUCED OR COPIED OR USED IN PART AS THE BASIS FOR THE MANUFACTURE OR SALE OF ITEM(S) WITHOUT WRITTEN PERMISSION</small>			
<small>UNLESS OTHERWISE SPECIFIED DIMENSIONS ARE IN INCHES TOLERANCES ON FINISH RMS63 ANGLES-1/2° FRACTIONS-1/64 3 PLACE DECIMALS: ±.010 2 PLACE DECIMALS: ±.02 1 PLACE DECIMALS: ±.1 FILLETS: .008R MAX REMOVE BURRS AND SHARP EDGES TO .005 MAX. R OR CHAMFER</small>		DRAFT MRG DATE 7-22-02 CHKD PROD ENGR QA	TITLE OUTLINE SP3T SWITCH SIZE B CAGE CODE 1UJ73 DWG NO 130-F201 SCALE 2/1 SHEET 1 OF 1



One Tanguay Avenue
 Nashua, New Hampshire 03063-1711
 Phone: 603-459-5900 • Fax: 603-459-5901



One Tanguay Avenue
 Nashua, New Hampshire 03063-1711
 Phone: 603-459-5900 • Fax: 603-459-5901



REVISIONS				
ZONE	SYM	DESCRIPTION	DATE	APPROVED

SPECIFICATIONS
 FREQUENCY RANGE: 0.5-4.0 GHz
 INSERTION LOSS: 1.5 dB MAX
 ISOLATION: 60 dB MIN
 VSWR: 2.0:1
 SWITCHING SPEED: 25 NANO SEC MAX
 BIAS: +5 VDC
 -12 VDC
 POWER HANDLING: 1 WATT CW

LOGIC: TTL COMPATIBLE

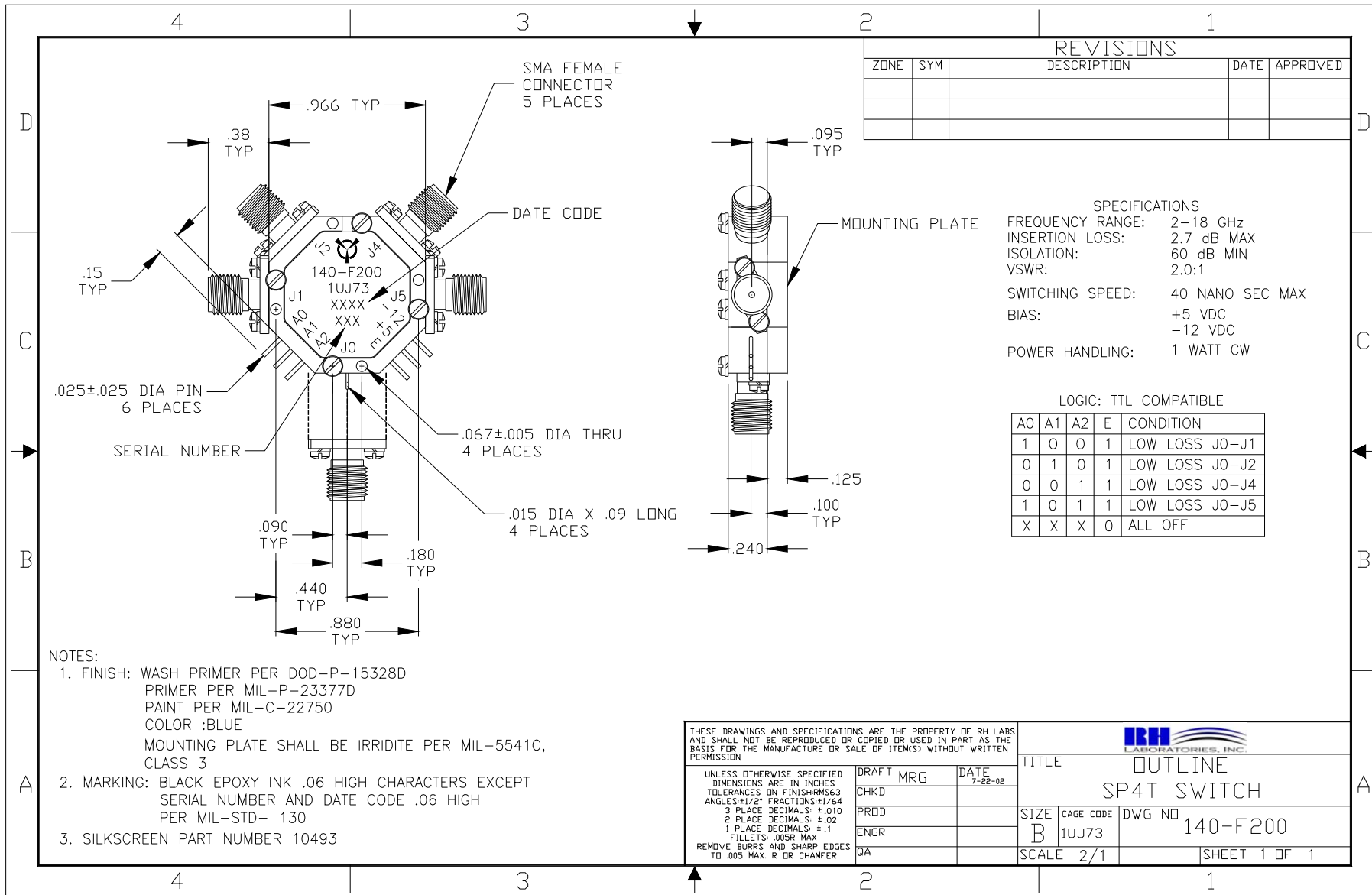
AO	A1	A2	CONDITION
1	0	0	LOW LOSS J0-J1
0	1	0	LOW LOSS J0-J3
0	0	1	LOW LOSS J0-J5

NOTES:
 1. FINISH: WASH PRIMER PER DOD-P-15328D
 PRIMER PER MIL-P-23377D
 PAINT PER MIL-C-22750
 COLOR :BLUE
 MOUNTING PLATE SHALL BE IRRIDITE PER MIL-5541C,
 CLASS 3
 2. MARKING: BLACK EPOXY INK .06 HIGH CHARACTERS EXCEPT
 SERIAL NUMBER AND DATE CODE .06 HIGH
 PER MIL-STD- 130

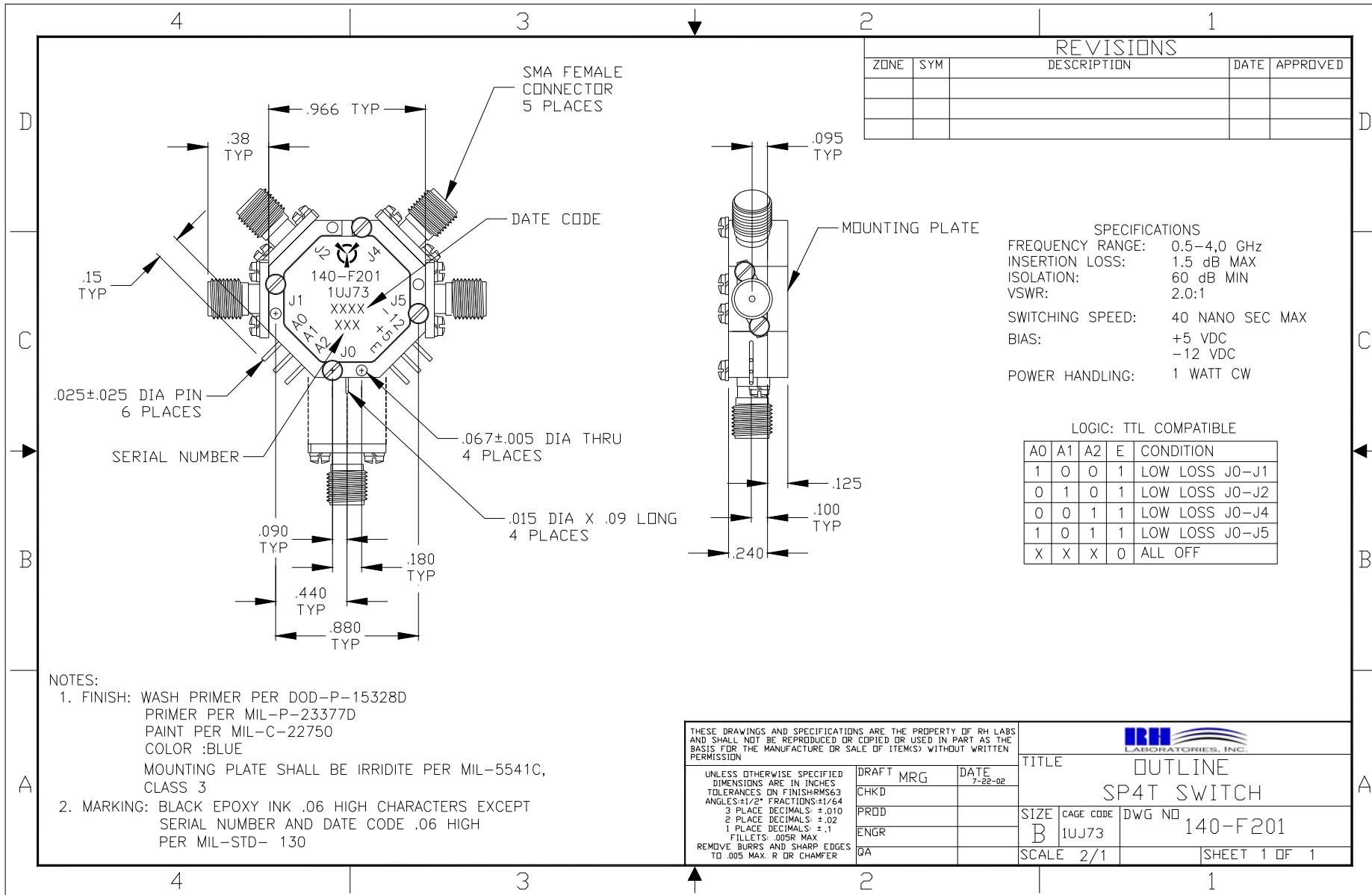
<small>THESE DRAWINGS AND SPECIFICATIONS ARE THE PROPERTY OF RH LABS AND SHALL NOT BE REPRODUCED OR COPIED OR USED IN PART AS THE BASIS FOR THE MANUFACTURE OR SALE OF ITEMS) WITHOUT WRITTEN PERMISSION</small>				
<small>UNLESS OTHERWISE SPECIFIED DIMENSIONS ARE IN INCHES TOLERANCES ON FINISHES: ANGLES: 1/2° FRACTIONS: 1/64 3 PLACE DECIMALS: ±.010 2 PLACE DECIMALS: ±.02 1 PLACE DECIMALS: ±.1 FILLETS: .005R MAX REMOVE BURRS AND SHARP EDGES TO .005 MAX. R OR CHAMFER</small>			DRAFT MRG CHKD PRDD ENGR QA	DATE 1-24-03
TITLE ABSORPTIVE SP3T SWITCH OUTLINE			SIZE B	CAGE CODE 1UJ73
DWG NO 130-F203			SCALE 2/1 SHEET 1 OF 1	



One Tanguay Avenue
 Nashua, New Hampshire 03063-1711
 Phone: 603-459-5900 • Fax: 603-459-5901



One Tanguay Avenue
 Nashua, New Hampshire 03063-1711
 Phone: 603-459-5900 • Fax: 603-459-5901



REVISIONS				
ZONE	SYM	DESCRIPTION	DATE	APPROVED

SPECIFICATIONS
 FREQUENCY RANGE: 0.5-4.0 GHz
 INSERTION LOSS: 1.5 dB MAX
 ISOLATION: 60 dB MIN
 VSWR: 2.0:1
 SWITCHING SPEED: 40 NANO SEC MAX
 BIAS: +5 VDC
 -12 VDC
 POWER HANDLING: 1 WATT CW

LOGIC: TTL COMPATIBLE

A0	A1	A2	E	CONDITION
1	0	0	1	LOW LOSS J0-J1
0	1	0	1	LOW LOSS J0-J2
0	0	1	1	LOW LOSS J0-J4
1	0	1	1	LOW LOSS J0-J5
X	X	X	0	ALL OFF

NOTES:
 1. FINISH: WASH PRIMER PER DOD-P-15328
 PRIMER PER MIL-P-23377D
 PAINT PER MIL-C-22750
 COLOR :BLUE
 MOUNTING PLATE SHALL BE IRRIDITE PER MIL-5541C,
 CLASS 3
 2. MARKING: BLACK EPOXY INK .06 HIGH CHARACTERS EXCEPT
 SERIAL NUMBER AND DATE CODE .06 HIGH
 PER MIL-STD- 130

THESE DRAWINGS AND SPECIFICATIONS ARE THE PROPERTY OF RH LABS AND SHALL NOT BE REPRODUCED OR COPIED OR USED IN PART AS THE BASIS FOR THE MANUFACTURE OR SALE OF ITEM(S) WITHOUT WRITTEN PERMISSION

UNLESS OTHERWISE SPECIFIED DIMENSIONS ARE IN INCHES TOLERANCES ON FINISHES: 3 PLACE DECIMALS: ±.010 2 PLACE DECIMALS: ±.02 1 PLACE DECIMALS: ±.1 FILLETS: .005R MAX REMOVE BURRS AND SHARP EDGES TO .005 MAX. R OR CHAMFER

DRAFT MRG DATE 7-22-02
 CHKD
 PRDD
 ENGR
 QA

IRH
LABORATORIES, INC.

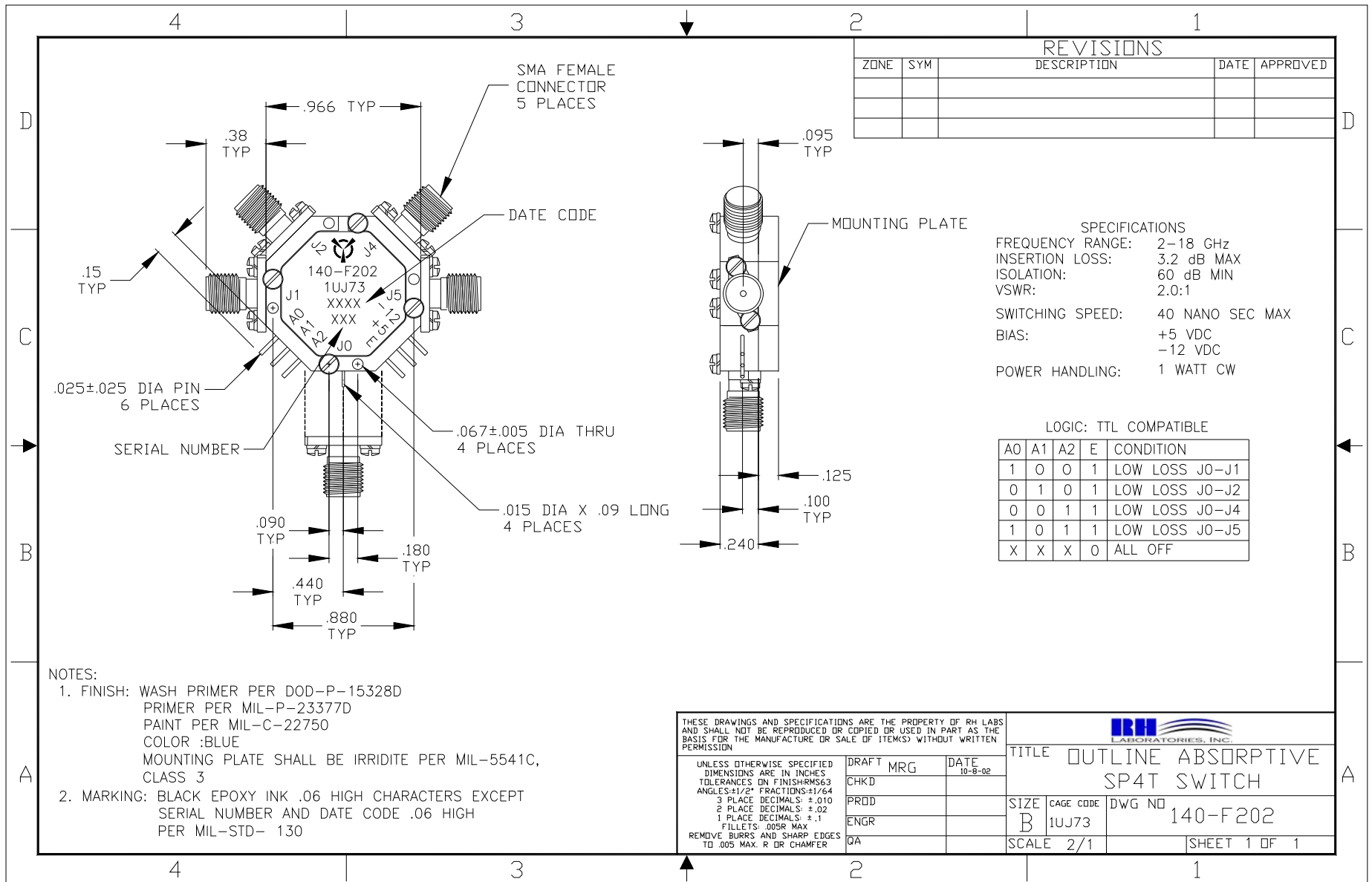
TITLE: **OUTLINE SP4T SWITCH**

SIZE: B CAGE CODE: 1UJ73 DWG NO: 140-F201

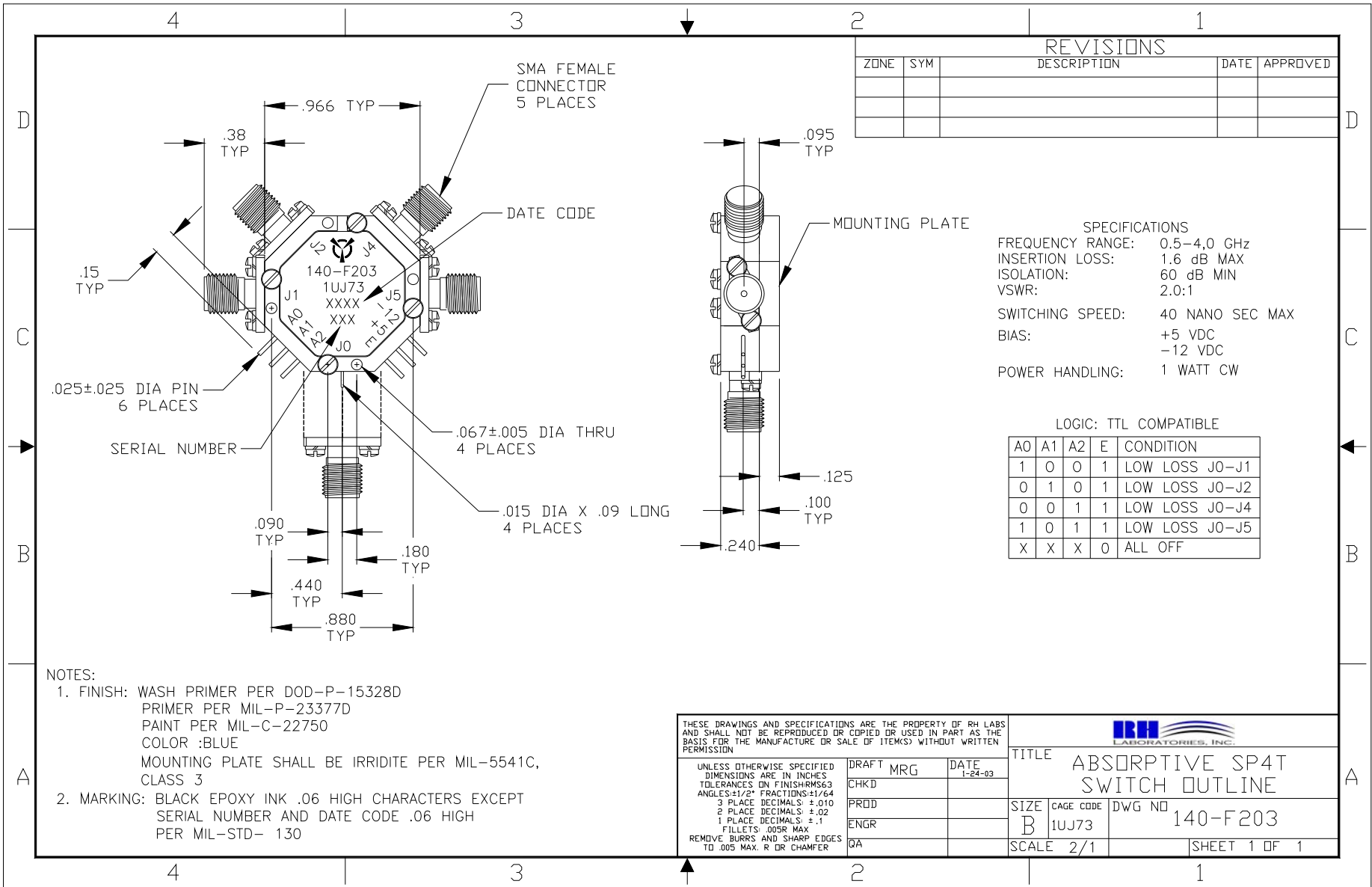
SCALE: 2/1 SHEET 1 OF 1



One Tanguay Avenue
 Nashua, New Hampshire 03063-1711
 Phone: 603-459-5900 • Fax: 603-459-5901



One Tanguay Avenue
 Nashua, New Hampshire 03063-1711
 Phone: 603-459-5900 • Fax: 603-459-5901



REVISIONS				
ZONE	SYM	DESCRIPTION	DATE	APPROVED

SPECIFICATIONS
 FREQUENCY RANGE: 0.5-4.0 GHz
 INSERTION LOSS: 1.6 dB MAX
 ISOLATION: 60 dB MIN
 VSWR: 2.0:1
 SWITCHING SPEED: 40 NANO SEC MAX
 BIAS: +5 VDC
 -12 VDC
 POWER HANDLING: 1 WATT CW

LOGIC: TTL COMPATIBLE

A0	A1	A2	E	CONDITION
1	0	0	1	LOW LOSS J0-J1
0	1	0	1	LOW LOSS J0-J2
0	0	1	1	LOW LOSS J0-J4
1	0	1	1	LOW LOSS J0-J5
X	X	X	0	ALL OFF

- NOTES:**
- FINISH: WASH PRIMER PER DOD-P-15328D
 PRIMER PER MIL-P-23377D
 PAINT PER MIL-C-22750
 COLOR :BLUE
 MOUNTING PLATE SHALL BE IRRIDITE PER MIL-5541C, CLASS 3
 - MARKING: BLACK EPOXY INK .06 HIGH CHARACTERS EXCEPT SERIAL NUMBER AND DATE CODE .06 HIGH PER MIL-STD- 130

THESE DRAWINGS AND SPECIFICATIONS ARE THE PROPERTY OF RH LABS AND SHALL NOT BE REPRODUCED OR COPIED OR USED IN PART AS THE BASIS FOR THE MANUFACTURE OR SALE OF ITEM(S) WITHOUT WRITTEN PERMISSION

UNLESS OTHERWISE SPECIFIED DIMENSIONS ARE IN INCHES
 TOLERANCES ON FINISH: RMS63
 ANGLES: 1/2° FRACTIONS: ±1/64
 3 PLACE DECIMALS: ±.010
 2 PLACE DECIMALS: ±.02
 1 PLACE DECIMALS: ±.1
 FILLETS: .005R MAX
 REMOVE BURRS AND SHARP EDGES TO .005 MAX. R OR CHAMFER

IRH
LABORATORIES, INC.

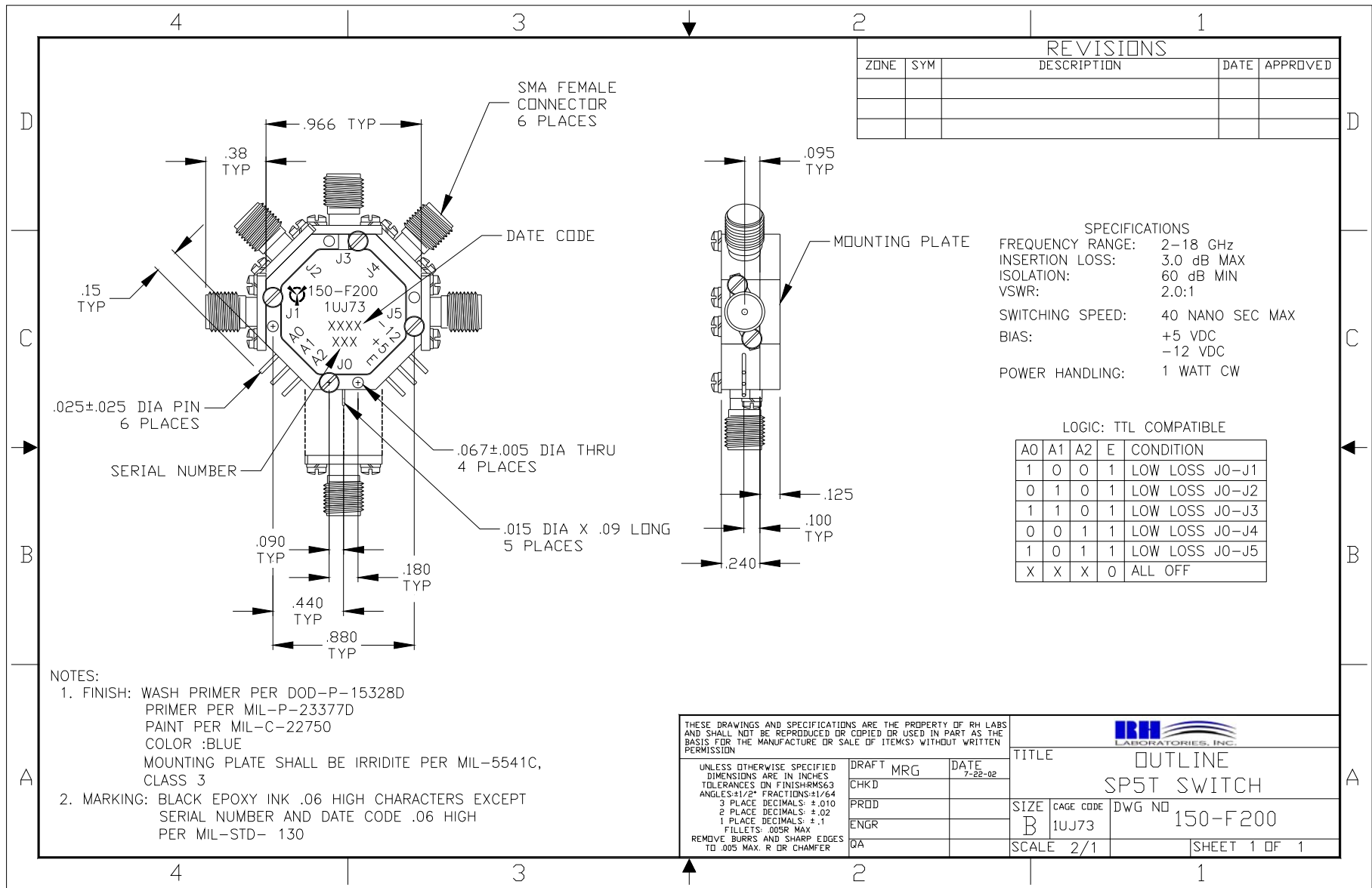
TITLE ABSORPTIVE SP4T SWITCH OUTLINE

DRAFT	MRG	DATE	1-24-03
CHKD			
PRD			
ENGR			
QA			

SIZE	CAGE CODE	DWG NO	140-F203
B	1UJ73		
SCALE	2/1	SHEET 1 OF 1	



One Tanguay Avenue
 Nashua, New Hampshire 03063-1711
 Phone: 603-459-5900 • Fax: 603-459-5901



REVISIONS				
ZONE	SYM	DESCRIPTION	DATE	APPROVED

SPECIFICATIONS
 FREQUENCY RANGE: 2-18 GHz
 INSERTION LOSS: 3.0 dB MAX
 ISOLATION: 60 dB MIN
 VSWR: 2.0:1
 SWITCHING SPEED: 40 NANO SEC MAX
 BIAS: +5 VDC
 -12 VDC
 POWER HANDLING: 1 WATT CW

LOGIC: TTL COMPATIBLE

A0	A1	A2	E	CONDITION
1	0	0	1	LOW LOSS J0-J1
0	1	0	1	LOW LOSS J0-J2
1	1	0	1	LOW LOSS J0-J3
0	0	1	1	LOW LOSS J0-J4
1	0	1	1	LOW LOSS J0-J5
X	X	X	0	ALL OFF

- NOTES:
- FINISH: WASH PRIMER PER DOD-P-15328D
 PRIMER PER MIL-P-23377D
 PAINT PER MIL-C-22750
 COLOR :BLUE
 MOUNTING PLATE SHALL BE IRRIDITE PER MIL-5541C,
 CLASS 3
 - MARKING: BLACK EPOXY INK .06 HIGH CHARACTERS EXCEPT
 SERIAL NUMBER AND DATE CODE .06 HIGH
 PER MIL-STD- 130

THESE DRAWINGS AND SPECIFICATIONS ARE THE PROPERTY OF RH LABS AND SHALL NOT BE REPRODUCED OR COPIED OR USED IN PART AS THE BASIS FOR THE MANUFACTURE OR SALE OF ITEM(S) WITHOUT WRITTEN PERMISSION

UNLESS OTHERWISE SPECIFIED DIMENSIONS ARE IN INCHES TOLERANCES ON FINISH: RMS63 ANGLES: 1/2" FRACTIONS: 1/64 3 PLACE DECIMALS: ±.010 2 PLACE DECIMALS: ±.02 1 PLACE DECIMALS: ±.1 FILLETS: .005R MAX REMOVE BURRS AND SHARP EDGES TO .005 MAX. R OR CHAMFER

DRAFT	MRG	DATE	7-22-02
CHKD			
PRDD			
ENGR			
QA			

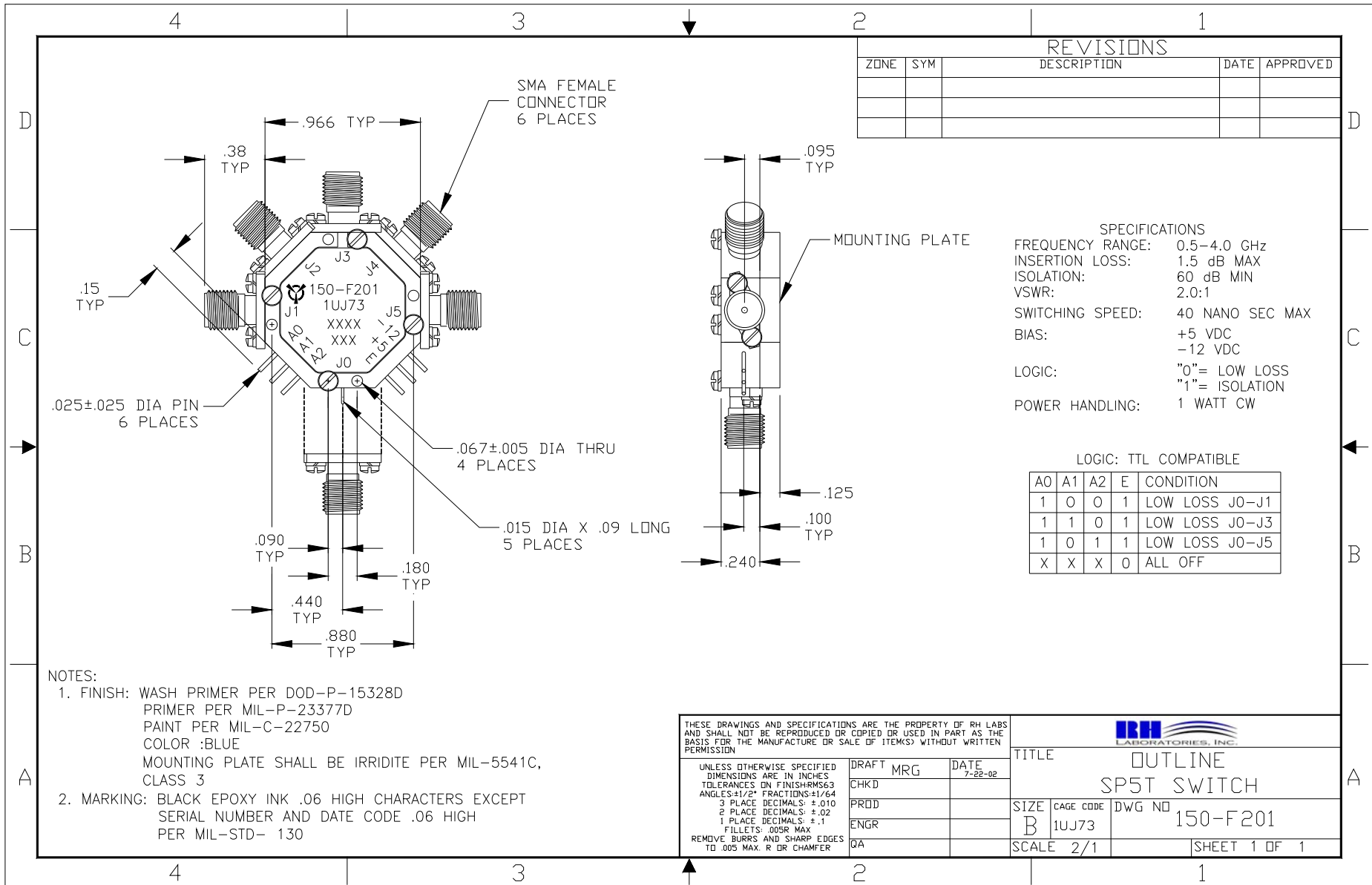
TITLE: OUTLINE
 SP5T SWITCH

SIZE: B CAGE CODE: 1UJ73 DWG NO: 150-F200

SCALE: 2/1 SHEET: 1 OF 1



One Tanguay Avenue
 Nashua, New Hampshire 03063-1711
 Phone: 603-459-5900 • Fax: 603-459-5901



REVISIONS				
ZONE	SYM	DESCRIPTION	DATE	APPROVED

SPECIFICATIONS

FREQUENCY RANGE: 0.5-4.0 GHz
 INSERTION LOSS: 1.5 dB MAX
 ISOLATION: 60 dB MIN
 VSWR: 2.0:1
 SWITCHING SPEED: 40 NANO SEC MAX
 BIAS: +5 VDC
 -12 VDC
 LOGIC: "0"= LOW LOSS
 "1"= ISOLATION
 POWER HANDLING: 1 WATT CW

LOGIC: TTL COMPATIBLE

A0	A1	A2	E	CONDITION
1	0	0	1	LOW LOSS J0-J1
1	1	0	1	LOW LOSS J0-J3
1	0	1	1	LOW LOSS J0-J5
X	X	X	0	ALL OFF

NOTES:

- FINISH: WASH PRIMER PER DOD-P-15328D
 PRIMER PER MIL-P-23377D
 PAINT PER MIL-C-22750
 COLOR :BLUE
 MOUNTING PLATE SHALL BE IRRIDITE PER MIL-5541C, CLASS 3
- MARKING: BLACK EPOXY INK .06 HIGH CHARACTERS EXCEPT SERIAL NUMBER AND DATE CODE .06 HIGH PER MIL-STD- 130

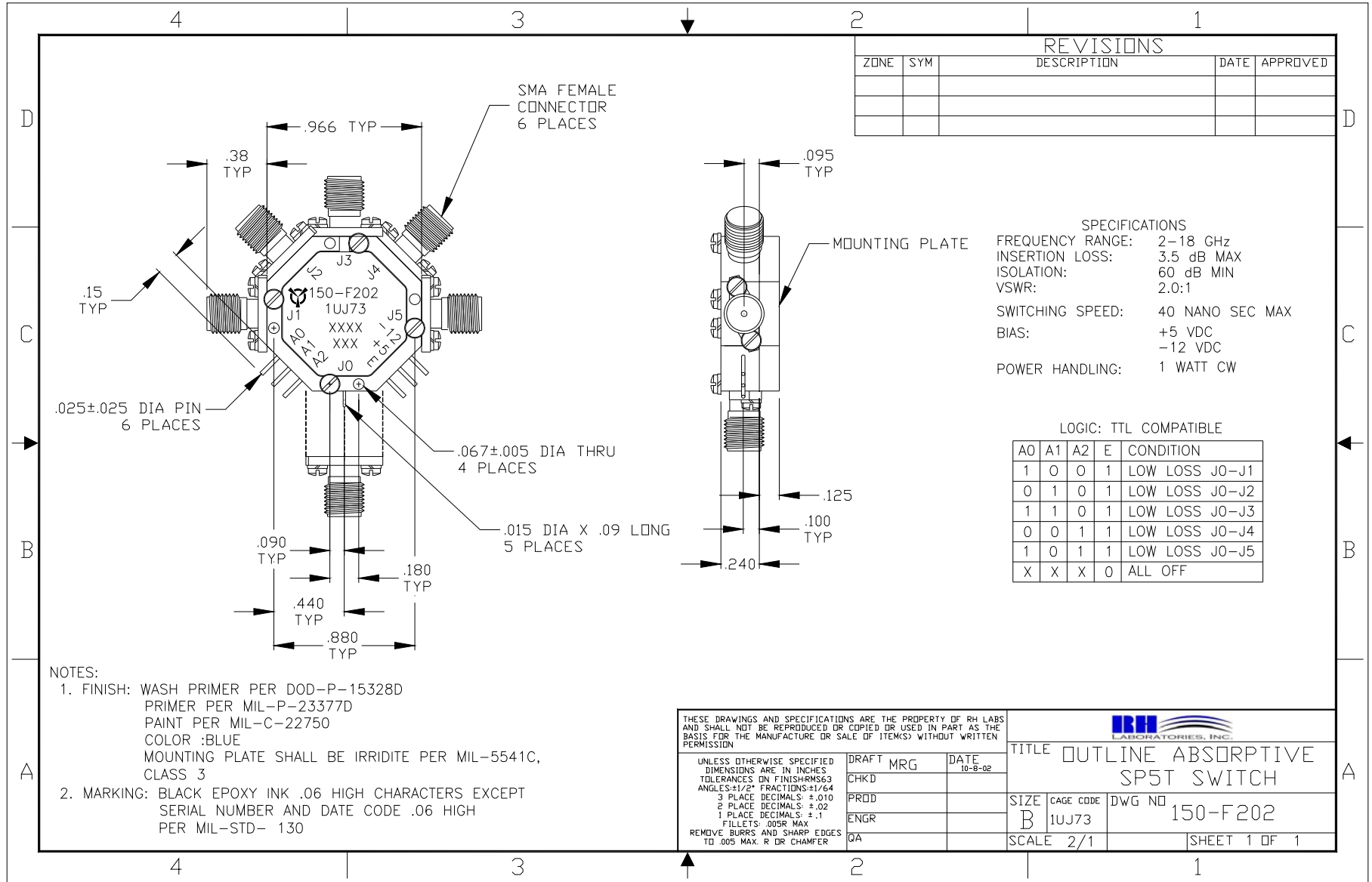
THESE DRAWINGS AND SPECIFICATIONS ARE THE PROPERTY OF RH LABS AND SHALL NOT BE REPRODUCED OR COPIED OR USED IN PART AS THE BASIS FOR THE MANUFACTURE OR SALE OF ITEM(S) WITHOUT WRITTEN PERMISSION

UNLESS OTHERWISE SPECIFIED DIMENSIONS ARE IN INCHES TOLERANCES ON FINISHES: .010 ANGLES: ±1/2° FRACTIONS: 1/64 3 PLACE DECIMALS: ±.010 2 PLACE DECIMALS: ±.02 1 PLACE DECIMALS: ±.1 FILLETS: .005R MAX REMOVE BURRS AND SHARP EDGES TO .005 MAX. R OR CHAMFER	DRAFT MRG CHKD PRD ENGR QA	DATE 7-22-02
--	--	-----------------

TITLE OUTLINE SP5T SWITCH		
SIZE B	CAGE CODE 1UJ73	DWG NO 150-F201
SCALE 2/1	SHEET 1 OF 1	



One Tanguay Avenue
 Nashua, New Hampshire 03063-1711
 Phone: 603-459-5900 • Fax: 603-459-5901



REVISIONS				
ZONE	SYM	DESCRIPTION	DATE	APPROVED

SPECIFICATIONS
 FREQUENCY RANGE: 2-18 GHz
 INSERTION LOSS: 3.5 dB MAX
 ISOLATION: 60 dB MIN
 VSWR: 2.0:1
 SWITCHING SPEED: 40 NANO SEC MAX
 BIAS: +5 VDC
 -12 VDC
 POWER HANDLING: 1 WATT CW

LOGIC: TTL COMPATIBLE

A0	A1	A2	E	CONDITION
1	0	0	1	LOW LOSS J0-J1
0	1	0	1	LOW LOSS J0-J2
1	1	0	1	LOW LOSS J0-J3
0	0	1	1	LOW LOSS J0-J4
1	0	1	1	LOW LOSS J0-J5
X	X	X	0	ALL OFF

- NOTES:**
- FINISH: WASH PRIMER PER DOD-P-15328D
 PRIMER PER MIL-P-23377D
 PAINT PER MIL-C-22750
 COLOR :BLUE
 MOUNTING PLATE SHALL BE IRRIDITE PER MIL-5541C,
 CLASS 3
 - MARKING: BLACK EPOXY INK .06 HIGH CHARACTERS EXCEPT
 SERIAL NUMBER AND DATE CODE .06 HIGH
 PER MIL-STD- 130

THESE DRAWINGS AND SPECIFICATIONS ARE THE PROPERTY OF RH LABS AND SHALL NOT BE REPRODUCED OR COPIED OR USED IN PART AS THE BASIS FOR THE MANUFACTURE OR SALE OF ITEMS WITHOUT WRITTEN PERMISSION

UNLESS OTHERWISE SPECIFIED
 DIMENSIONS ARE IN INCHES
 TOLERANCES ON FINISH RMS63
 ANGLES=1/2° FRACTIONS=1/64
 3 PLACE DECIMALS: ±.010
 2 PLACE DECIMALS: ±.02
 1 PLACE DECIMALS: ±.1
 FILLETS: .008R MAX
 REMOVE BURRS AND SHARP EDGES
 TO .005 MAX R OR CHAMFER

IRH
LABORATORIES, INC.

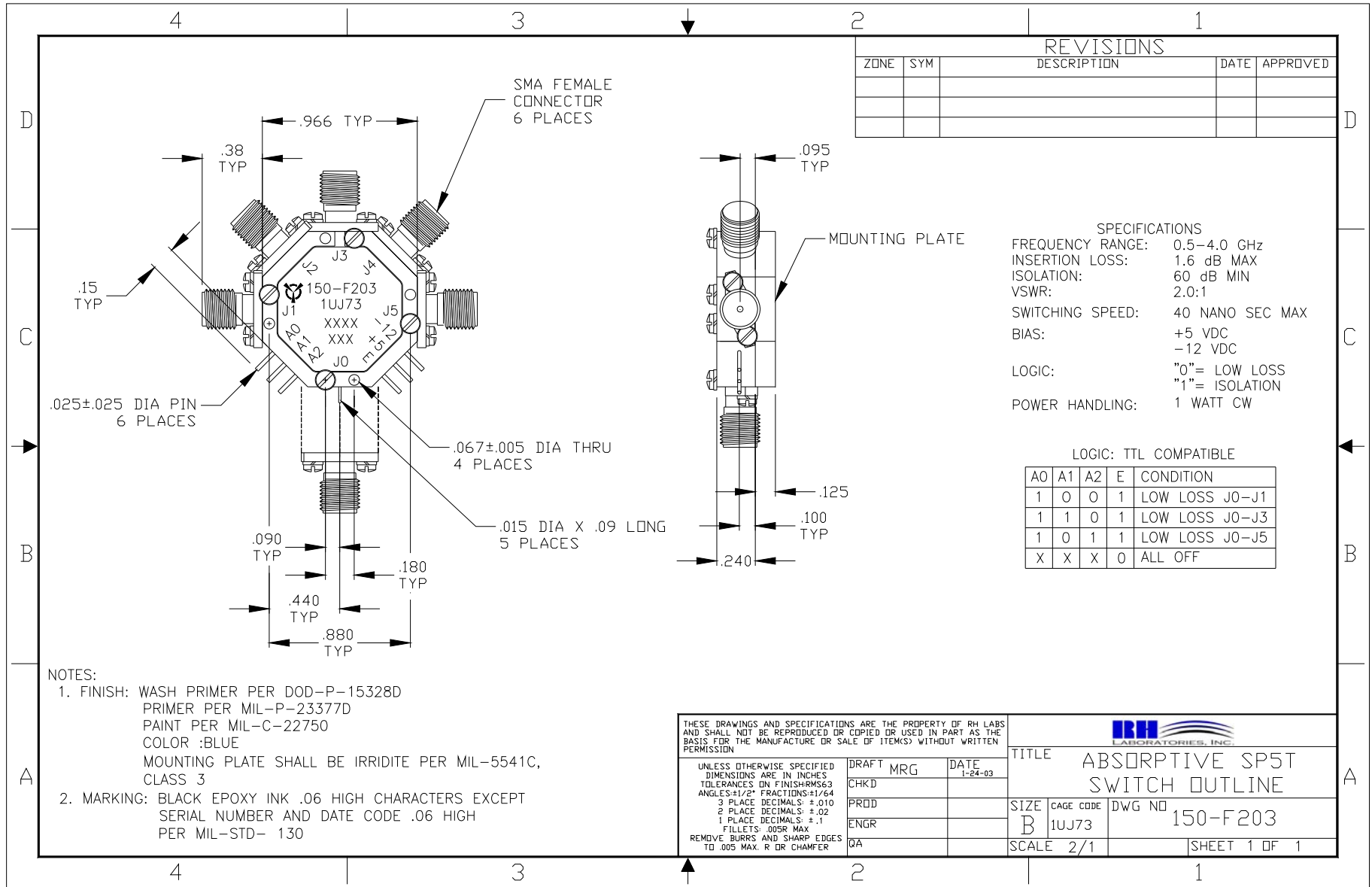
TITLE OUTLINE ABSORPTIVE
SP5T SWITCH

SIZE B **CAGE CODE** 1UJ73 **DWG NO** 150-F202

SCALE 2/1 **SHEET** 1 OF 1



One Tanguay Avenue
 Nashua, New Hampshire 03063-1711
 Phone: 603-459-5900 • Fax: 603-459-5901



REVISIONS				
ZONE	SYM	DESCRIPTION	DATE	APPROVED

SPECIFICATIONS

FREQUENCY RANGE: 0.5-4.0 GHz
 INSERTION LOSS: 1.6 dB MAX
 ISOLATION: 60 dB MIN
 VSWR: 2.0:1
 SWITCHING SPEED: 40 NANO SEC MAX
 BIAS: +5 VDC
 -12 VDC
 LOGIC: "0"= LOW LOSS
 "1"= ISOLATION
 POWER HANDLING: 1 WATT CW

LOGIC: TTL COMPATIBLE

A0	A1	A2	E	CONDITION
1	0	0	1	LOW LOSS J0-J1
1	1	0	1	LOW LOSS J0-J3
1	0	1	1	LOW LOSS J0-J5
X	X	X	0	ALL OFF

- NOTES:**
- FINISH: WASH PRIMER PER DOD-P-15328D
 PRIMER PER MIL-P-23377D
 PAINT PER MIL-C-22750
 COLOR :BLUE
 MOUNTING PLATE SHALL BE IRRIDITE PER MIL-5541C,
 CLASS 3
 - MARKING: BLACK EPOXY INK .06 HIGH CHARACTERS EXCEPT
 SERIAL NUMBER AND DATE CODE .06 HIGH
 PER MIL-STD- 130

THESE DRAWINGS AND SPECIFICATIONS ARE THE PROPERTY OF RH LABS AND SHALL NOT BE REPRODUCED OR COPIED OR USED IN PART AS THE BASIS FOR THE MANUFACTURE OR SALE OF ITEM(S) WITHOUT WRITTEN PERMISSION

UNLESS OTHERWISE SPECIFIED DIMENSIONS ARE IN INCHES
 TOLERANCES IN FINISH: RMS63
 ANGLES: 1/2° FRACTIONS: 1/64
 3 PLACE DECIMALS: ±.010
 2 PLACE DECIMALS: ±.02
 1 PLACE DECIMALS: ±.1
 FILLETS: .005R MAX
 REMOVE BURRS AND SHARP EDGES
 TO .005 MAX. R DR CHAMFER

DRAFT MRG DATE 1-24-03
 CHKD
 PRDD
 ENGR
 QA

IRH LABORATORIES, INC.

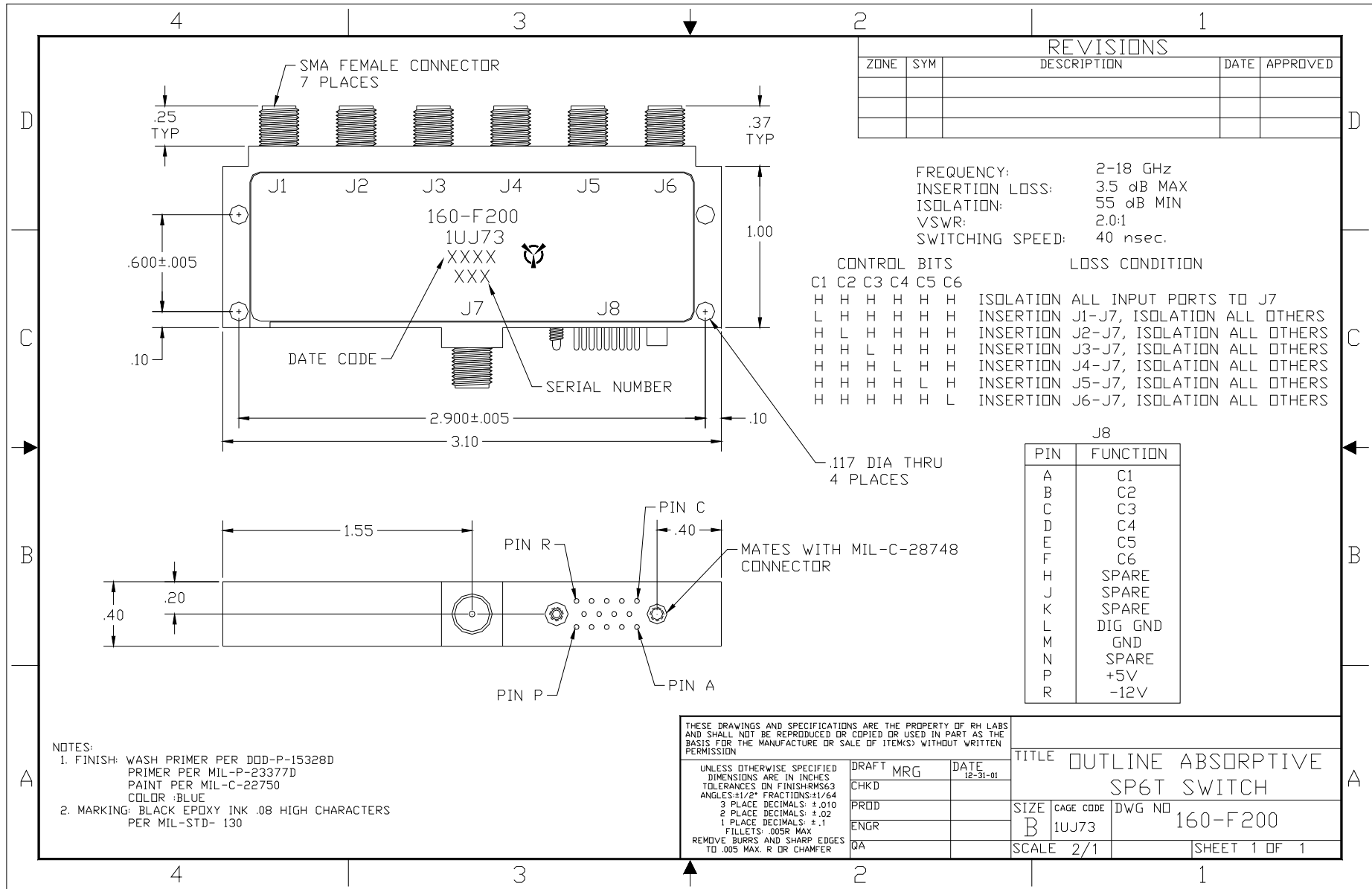
TITLE ABSORPTIVE SP5T SWITCH OUTLINE

SIZE B CAGE CODE 1UJ73 DWG NO 150-F203

SCALE 2/1 SHEET 1 OF 1



One Tanguay Avenue
 Nashua, New Hampshire 03063-1711
 Phone: 603-459-5900 • Fax: 603-459-5901



One Tanguay Avenue
 Nashua, New Hampshire 03063-1711
 Phone: 603-459-5900 • Fax: 603-459-5901

