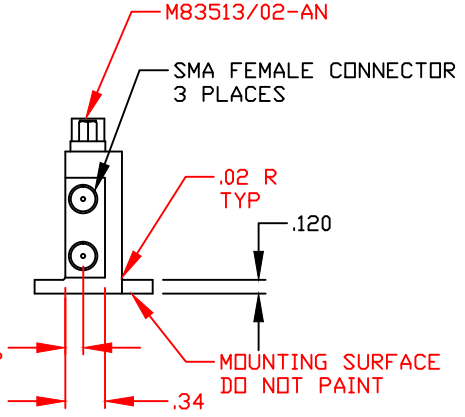
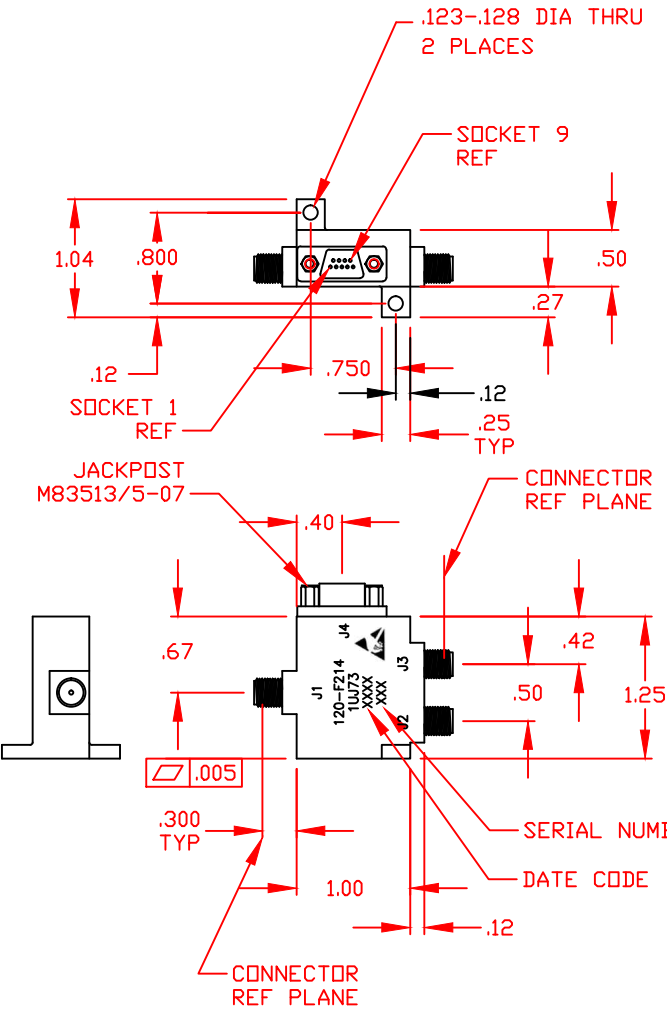


REVISIONS				
ZONE	SYM	DESCRIPTION	DATE	APPROVED
	-	INITIAL RELEASE	7-18-17	MRG

J4

SOCKET NUMBER	FUNCTION
1	+30V
2	-5V
3	J3 CONTROL
4	+5V
5	J2 CONTROL
6	GND
7	GND
8	GND
9	GND

- NOTES:
- FINISH: WASH PRIMER PER DOD-P-15328  
PRIMER PER MIL-P-23377  
PAINT PER MIL-C-22750  
COLOR :GRAT PER 36231
  - MARKING: BLACK EPOXY INK .08 HIGH CHARACTERS  
PER MIL-STD- 130
  - MOUNTING SURFACE TO BE GOLD PLATE PER  
MIL-G-45204, TYPE III, GRADE A  
50 MICROINCHES THICK OVER ELECTROLESS NICKEL  
PER MIL-C-26074, GRADE B, 200-300 MICROINCHES THICK
  - LOGIC 0 = INSERTION LOSS J2  
LOGIC 1 = INSERTION LOSS J3



CAUTION  
STATIC SENSITIVE MATERIAL  
ALL HANDLING/OPERATIONS TO BE PERFORMED  
ONLY AT APPROVED WORK STATIONS

THESE DRAWINGS AND SPECIFICATIONS ARE THE PROPERTY OF RH LABS AND SHALL NOT BE REPRODUCED OR COPIED OR USED IN PART AS THE BASIS FOR THE MANUFACTURE OR SALE OF ITEMS WITHOUT WRITTEN PERMISSION

DRAFT	MRG	DATE	7-18-17
CHKD	MRG	DATE	7-18-17
PRDD			
ENGR			
QA			

UNLESS OTHERWISE SPECIFIED  
DIMENSIONS ARE IN INCHES  
TOLERANCES ON FINISHES:  
ANGLES: 1/2° FRACTIONS: 1/64  
3 PLACE DECIMALS: ±.010  
2 PLACE DECIMALS: ±.02  
1 PLACE DECIMALS: ±.1  
FILLETS: .005R MAX  
REMOVE BURRS AND SHARP EDGES  
TO .005 MAX. R OR CHAMFER

TITLE		OUTLINE SPDT SWITCH	
SIZE	CAGE CODE	DWG NO	
B	1UJ73	120-f214	
SCALE	1/1	SHEET	1 OF 1