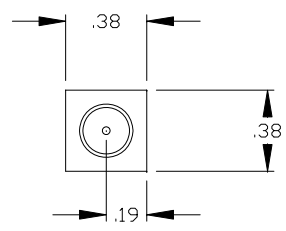
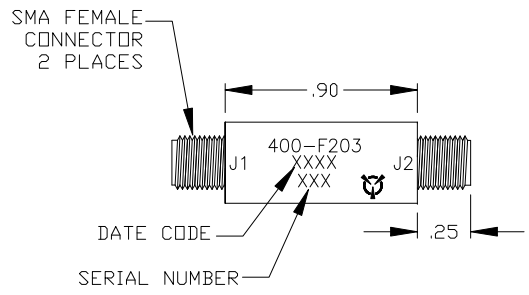


REVISIONS				
ZONE	SYM	DESCRIPTION	DATE	APPROVED



SPECIFICATIONS

FREQUENCY RANGE: 2-18.0 GHz

INSERTION LOSS: 2.0 dB MAX

LEAKAGE POWER: 80 mWATTS

PEAK POWER 1000 WATTS

AVG POWER 5 WATTS

RECOVERY TIME 80 NANOSECONDS

- NOTES:
- FINISH: WASH PRIMER PER DOD-P-15328D
PRIMER PER MIL-P-23377D
PAINT PER MIL-C-22750
COLOR :BLUE
 - MARKING: BLACK EPOXY INK .06 HIGH PER MIL-STD- 130

THESE DRAWINGS AND SPECIFICATIONS ARE THE PROPERTY OF RH LABS AND SHALL NOT BE REPRODUCED OR COPIED OR USED IN PART AS THE BASIS FOR THE MANUFACTURE OR SALE OF ITEMS) WITHOUT WRITTEN PERMISSION

UNLESS OTHERWISE SPECIFIED
DIMENSIONS ARE IN INCHES
TOLERANCES ON FINISH: .005
ANGLES: 1/2" FRACTIONS: 1/64
3 PLACE DECIMALS: ± .010
2 PLACE DECIMALS: ± .02
1 PLACE DECIMALS: ± .1
FILLETS: .005R MAX
REMOVE BURRS AND SHARP EDGES TO .005 MAX. R OR CHAMFER

DRAFT	DEC	DATE	12-17-02
CHKD			
PROD			
ENGR			
QA			



TITLE			LIMITER OUTLINE	
SIZE	CAGE CODE	DWG NO	400-F203	
B	1UJ73			
SCALE	2/1		SHEET 1 OF 1	



One Tanguay Avenue
Nashua, New Hampshire 03063-1711
Phone: 603-459-5900 • Fax: 603-459-5901
Email: Sales@RH-Labs.com